

**INSTALLER: Leave this manual with the appliance.
CONSUMER: Retain this manual for future reference.**

These instructions are supplementary to the Installation and Operating Instructions supplied with the fireplace and should be kept together. Refer to the Installation and Operating Instructions for proper gas supply, safety requirements and operating instructions



TOWN & COUNTRY
L U X U R Y F I R E P L A C E S

**TC36
CHALET
BURNER KIT
INSTALLATION
INSTRUCTIONS**



**SKU# 22150015
For TC36D & TC36D Arch
Series D/D2**



Visit www.townandcountryfireplaces.net for the most recent version of this manual

Contents of Package

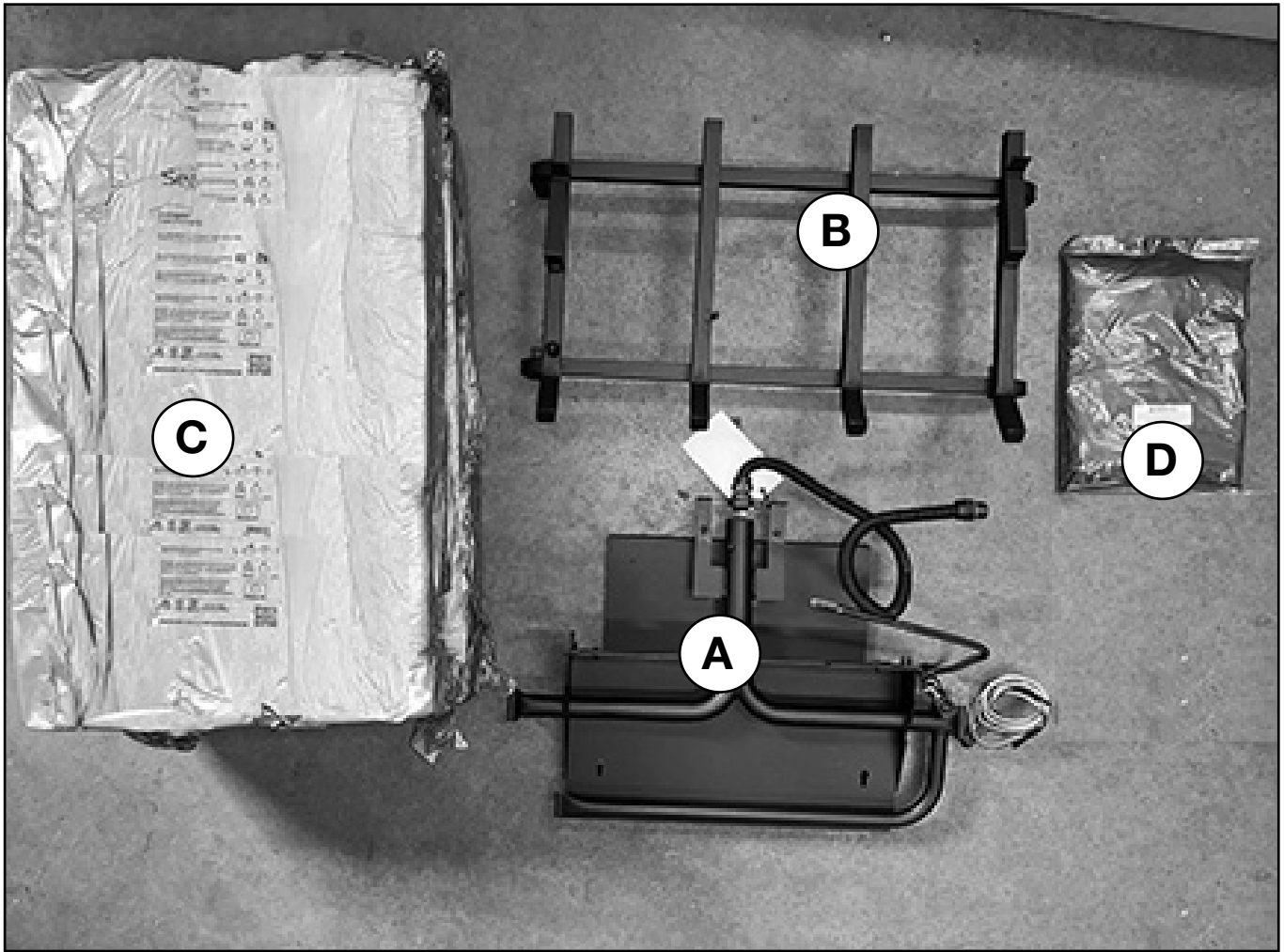


Figure 1: TC36 Heartwood burner kit parts.

- A. BURNER ASSEMBLY
- B. LOG GRATE
- C. TC36 LOGS
- D. EMBER MATERIAL
- E. HARDWARE PACKAGE
(NOT SHOWN)

Burner Installation

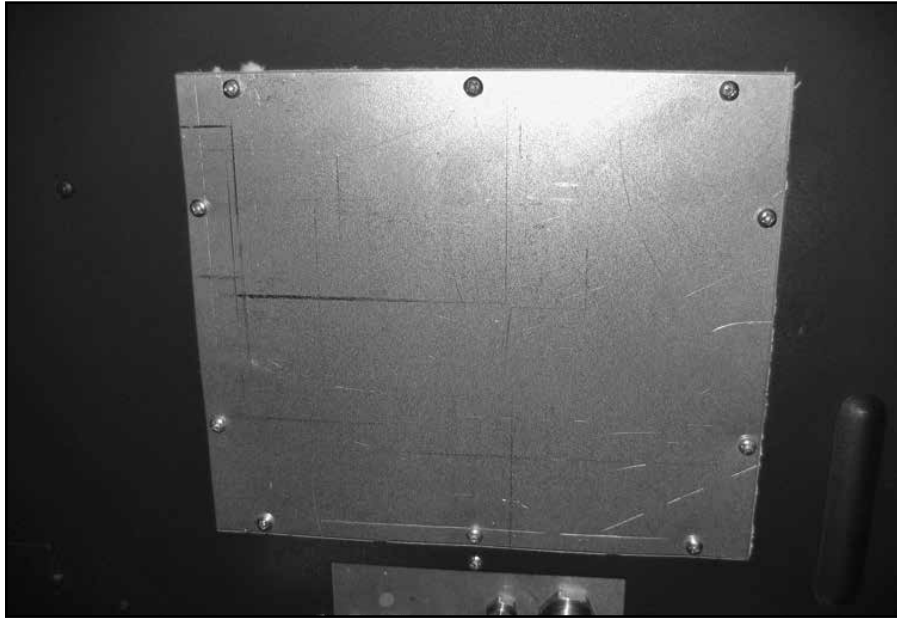


Figure 2: Access cover to valve control center.

1. Remove the 10 screws securing the access cover for the valve control center (Figure 2).
2. Attach the main gas supply line and the pilot gas supply line to the bulk head fittings and tighten. Ensure that there are no leaks. Feed the ignition and sensor wires through the bulkhead plate and gasket to the firebox(Fig. # 3)

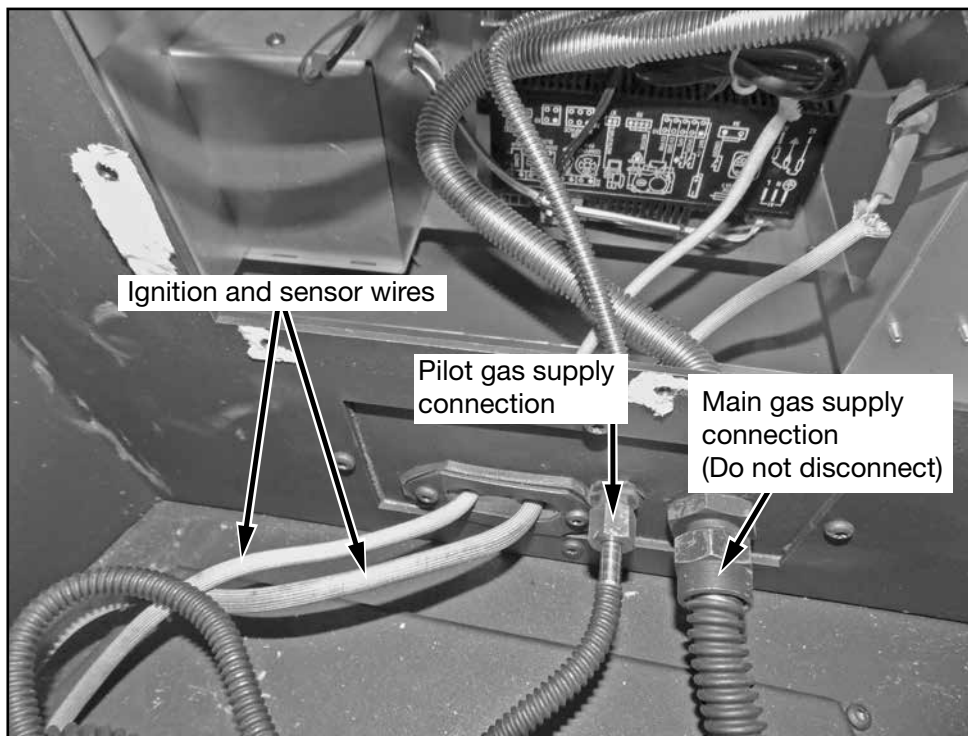


Figure 3: Gas supply tubes and Ignition/Sensor wire routing.

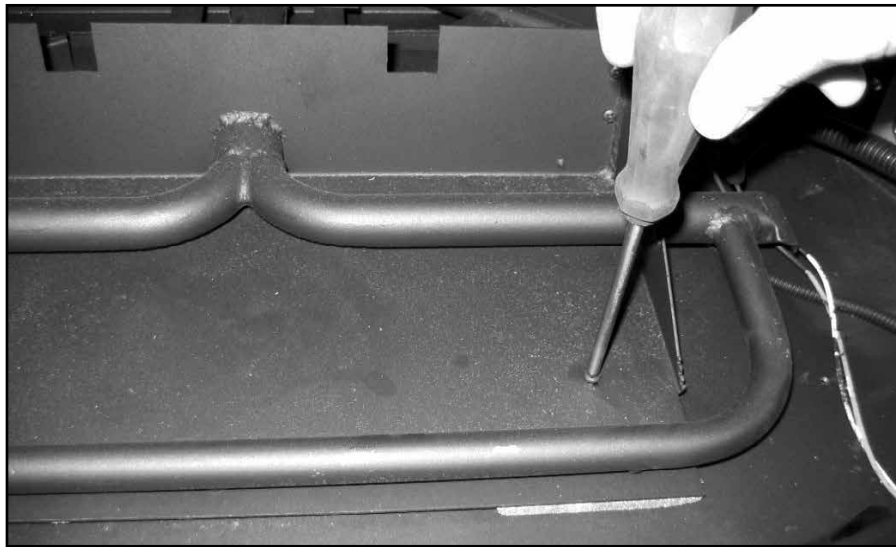


Figure 4: Attach burner to firebox shield.

3. Attach the burner assembly to the floor shield in the bottom of the firebox with the two screws provided. Ensure that the front edge of the burner is flush with the front of the shield.(Figure 4).

4. Attach the ignition and sensor wires to the module. (Fig.#5).

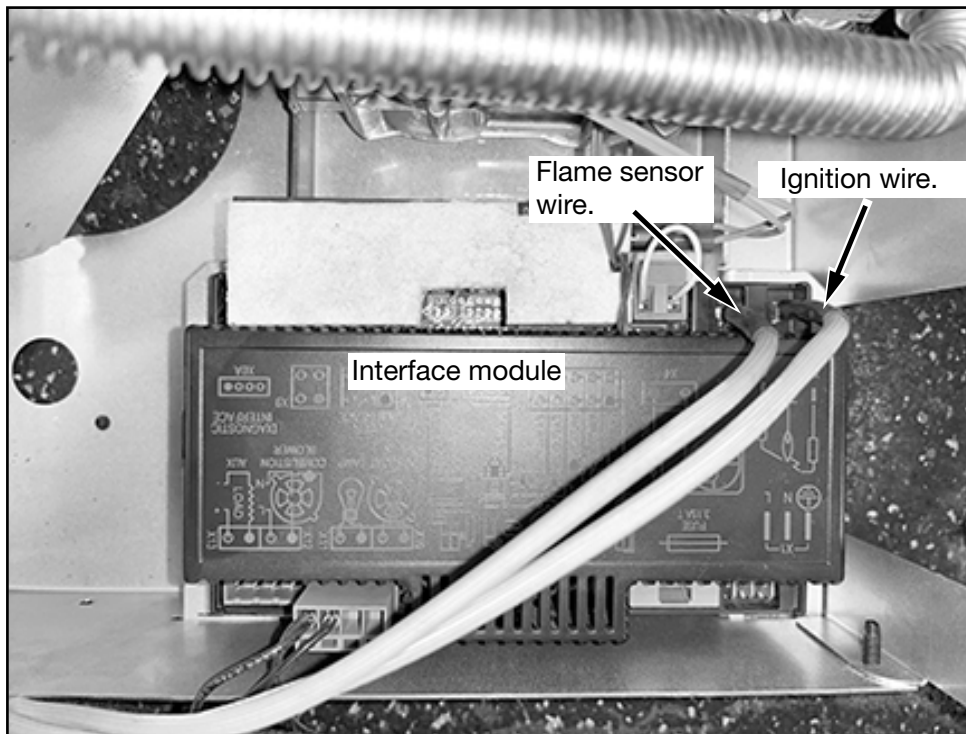


Figure 5: Attach Ignition and Sensor wires.

A panel set must now be installed. See Installation and Operating Instructions manual for details.



Figure 6: Attach log grate to floor.

5. Position the slots of the grate securing brackets over the holes in the floor shield and secure with the two screws.(Figure 6).

Burner Installation

A large bag of ember material is shipped with the fireplace and needs to be installed on the burner to ensure optimum performance and flame appearance.

1. Pull apart the material into ember size pieces (approximately 1" squares) and gently place them into the burner pan. Do not compress, leave them loose for best performance.
2. Fill the burner pan level with the top of the pan at rear, and gradually sloping forward down to the firebox floor at the front, covering both burner tubes.
3. Place remaining ember material outside of the burner pan as desired to cover-up gas lines and brackets.

Note:

Ember material placement and amount will affect flame appearance. More ember material results in lower flame height. Add or remove as needed until desired flame affect.

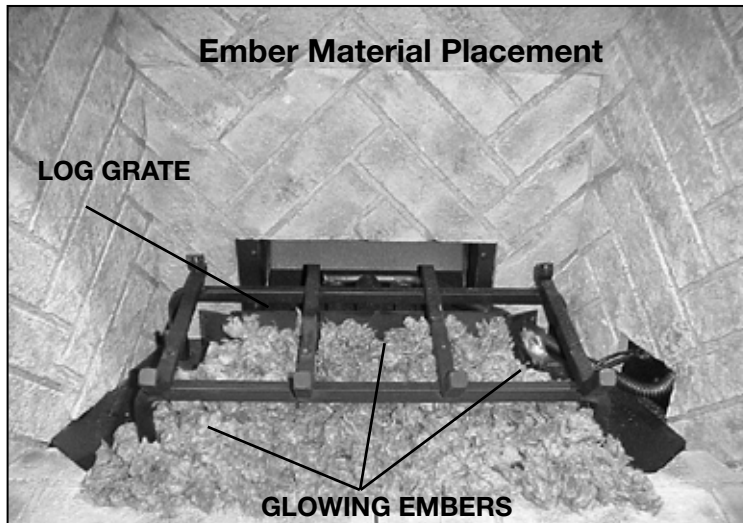
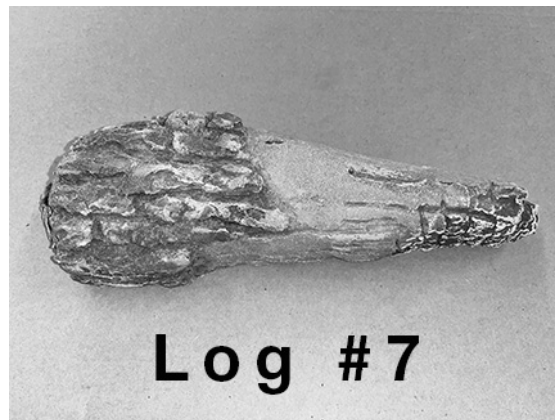
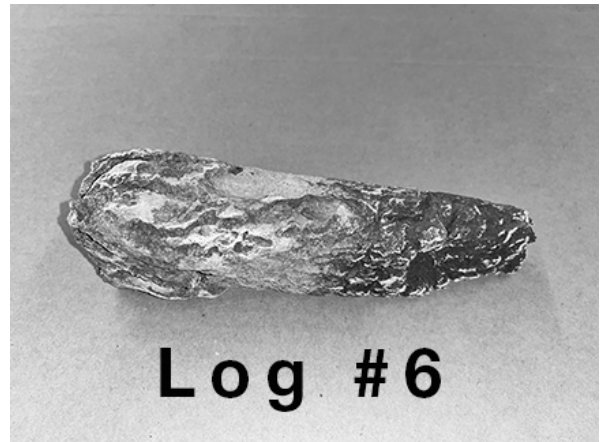
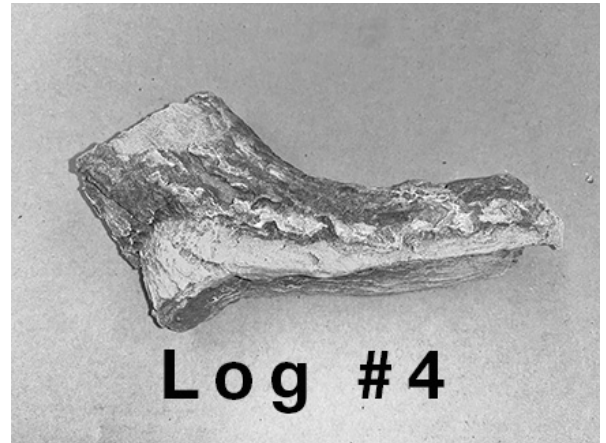
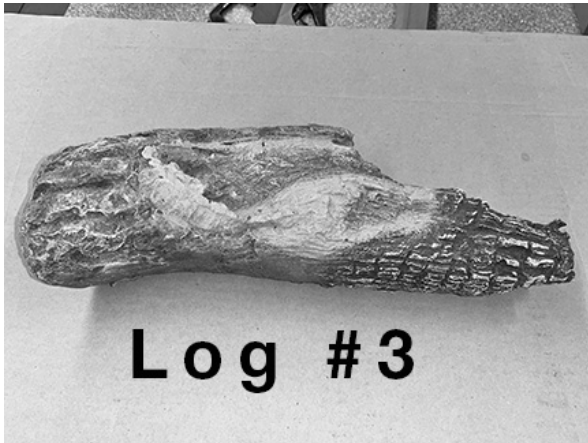
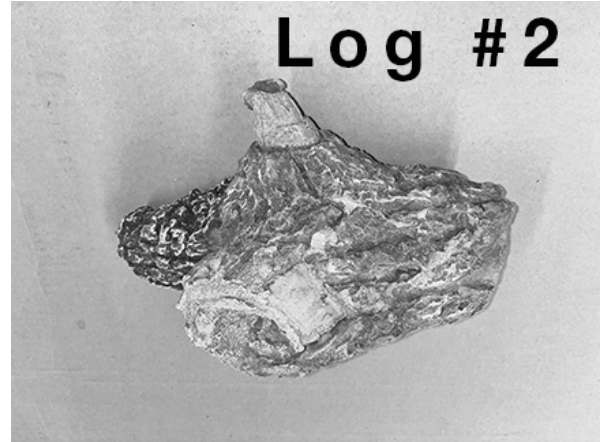
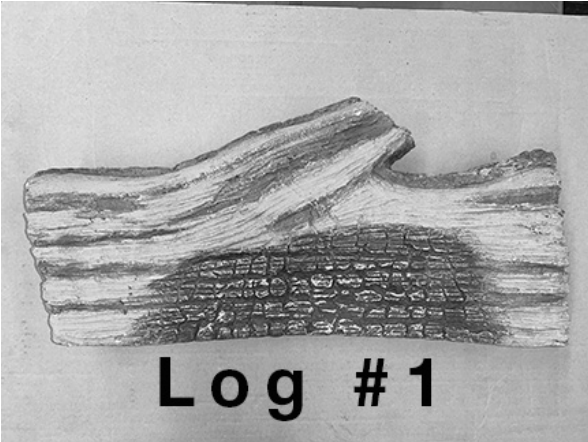


Figure 7: Ember material placement

Log Set Assembly



Log Placement

Gas plumbing and vent connections should be completed before proceeding.

The logs are fragile and should be handled with care. Unpack and inspect log set. There should be a total of 7 logs.

Position the logs as indicated by the following pictures. Place the rear log back against the tabs located at the back of the grate. (Figure 8).



Figure 8: Log #1.

Place log 2 as pictured, engaging the pins with corresponding holes on the underside of the log.



Figure 9: Log #2.

Install log 3 onto the grate and pull it forward into position as shown.



Figure 10: Log #3.



Figure 11: Log #4.

Place log 4 on the floor of the fireplace to left of the log grate with the log curving around the leg of the log grate.



Figure 12: Log #5.

Place log 5 on the floor in front of the log grate, in the center and covering the space where the two floor panels come together. Have the narrow, charred end of the log towards the front of the fireplace.

Place log 6 with the thick end on log 5 and pointing to the left.



Figure 13: Log #6.

Place log 7 in front of the log grate leg on the right with the charred end pointing to the center of the fireplace.



Figure 14: Log #7.

Note: Improper placement of logs will cause sooting on internal parts and glass.

Propane Conversion

Note: The propane conversion kit is not included with the burner kit. The conversion kit is an option which must be ordered separately.

If the unit is to be used with propane gas, convert the fireplace from natural gas as follows using the components supplied with this burner kit.

Note: Factory supplied components must be used to ensure correct input. After conversion confirm proper manifold pressure.

WARNING

This conversion kit shall be installed by a qualified service agency in accordance with the manufacturer's instructions and all applicable codes and requirements of the authority having jurisdiction.

If the information in these instructions is not followed exactly, a fire, explosion or production of carbon monoxide may result causing property damage, personal injury or loss of life.

The qualified service agency is responsible for the proper installation of this kit.

The installation is not proper and complete until the operation of the converted appliance is checked as specified in the manufacturer's instructions supplied with the kit.

CAUTION

The gas supply and electrical power must be shut off before proceeding with the conversion.

1. Ensure the burner, pilot and gas supply are turned off, and the appliance has cooled.
2. Remove the two screws securing the manifold assembly to the burner (Figure 15).
3. Remove the manifold assembly from the burner (Figure 16).

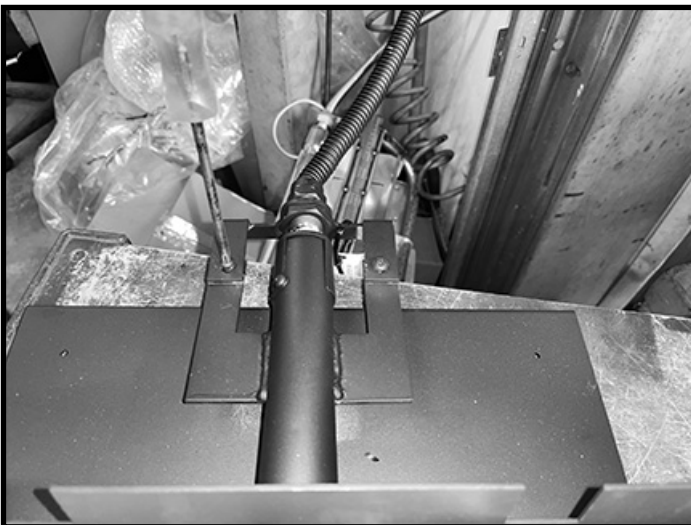


Figure 15: Unscrewing manifold from the burner.

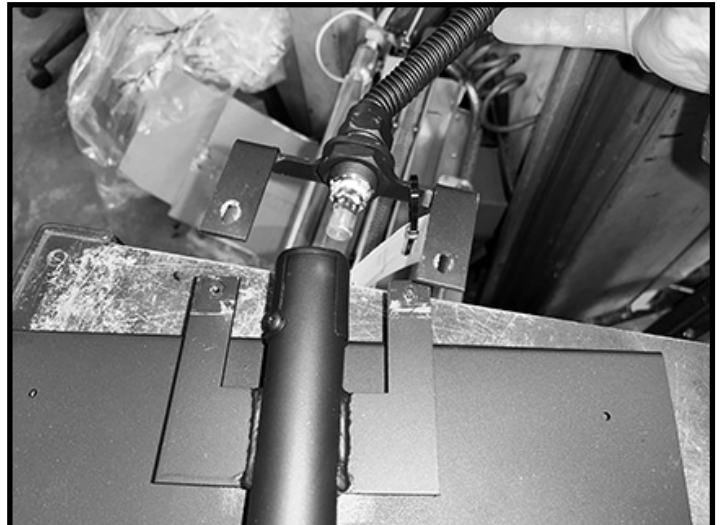


Figure 16: Orifice exposed.

4. With a ½” wrench remove the natural gas orifice (Figure 17).
5. Apply a small amount of sealing cement to the threads then install the propane orifice (marked “LI”) (Figure 18).
6. Fully open the primary air shutter.



Figure 17: Removing orifice.



Figure 18: Orifice.

7. Reinstall the manifold assembly.
8. With a 7/16” wrench loosen the pilot head on the pilot assembly by a half-turn (Figure 19)
9. Slide the pilot adjustment band over and ensure that the hole in the orifice band is showing. Figure 20 shows the pilot band in natural gas position. Figure 21 shows the pilot band in propane position.

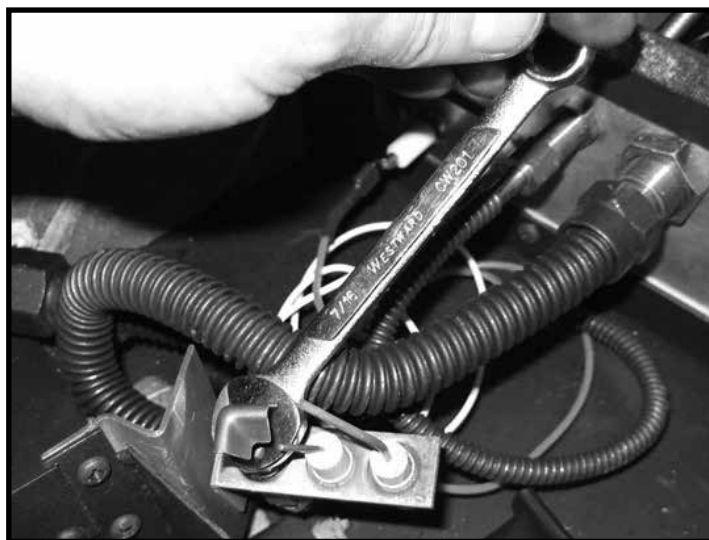


Figure 19: Loosening the pilot head.

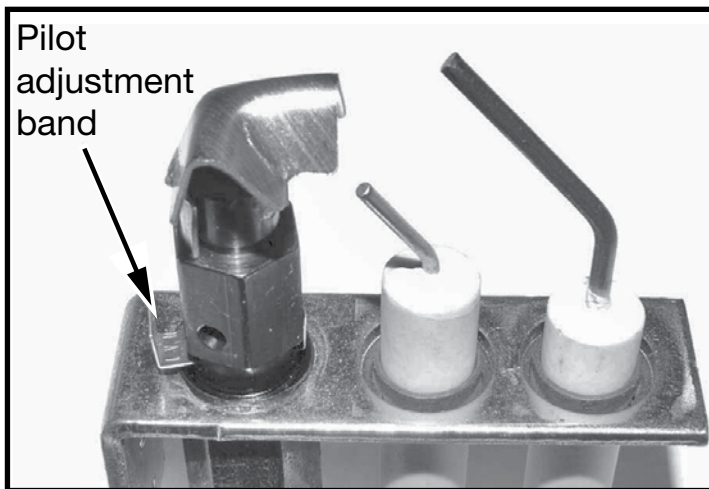


Figure 20: Pilot band in natural gas position.

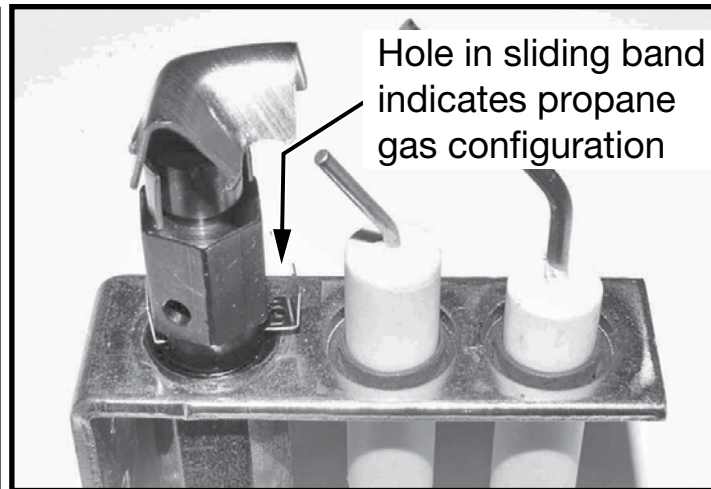


Figure 21: Pilot band in propane gas position.

1. Open the air shutter by following the steps in the “Burner Flame Adjustment” on page 13.
2. Complete the gas valve conversion from natural gas to propane gas according to the instructions included in the SIT propane gas conversion kit.
3. Fill in the conversion label Figure 22 . Peel off the protective backing and apply the conversion label directly over the gas specifications on the rating label. Rating label can be found on a metal plate stored on the left hand side of the fireplace, behind the decorative trim.

| | |
|--|--|
| This appliance was converted to propane gas | |
| Kit Number | PACIFIC ENERGY |
| | 5052.52001-B |
| dd / mm / yy | l'entreprise désignée ci-dessus accepte la responsabilité que cette conversion a été correctement faite. |
| Company | Adresse |
| Address | Firme |
| The above accepts the responsibility that this conversion has been properly performed. | j / m / a |
| 5052.52001-B | Numéro d'assemblage |
| PACIFIC ENERGY | |
| Cet appareil a été converti en gaz propane | |

Figure 22: Propane conversion label.

For complete valve installation instructions, refer to the instruction book included in the SIT conversion kit.

Burner Flame Adjustment

The air shutter on the burner tube controls the primary combustion air to the gas burner and is preset at the factory for natural gas fuel. Some adjustment may be necessary to obtain desired flame and to eliminate carbon deposits. Evaluate flame appearance after the fireplace has reached operating temperature. See Fig. #22 for proper flame pattern.

Open primary air shutter if the logs, glass, and firebox have carbon accumulation and / or the flames are long, dark and stringy. The shutter may also be opened to enhance the Ember Material glow and lessen the flame height.

For Propane, start with the air shutter fully open and adjust to decrease air if needed.

Caution: Burner area may be hot!

Turn off the fireplace and allow the unit to cool before proceeding.



Figure 23: Desirable flame appearance.

Caution: Proper air shutter setting is a must.

The flame should be just orange and “lazy”. It should NEVER be set to create sooting on internal parts and glass.

PRIMARY
AIR SHUTTER

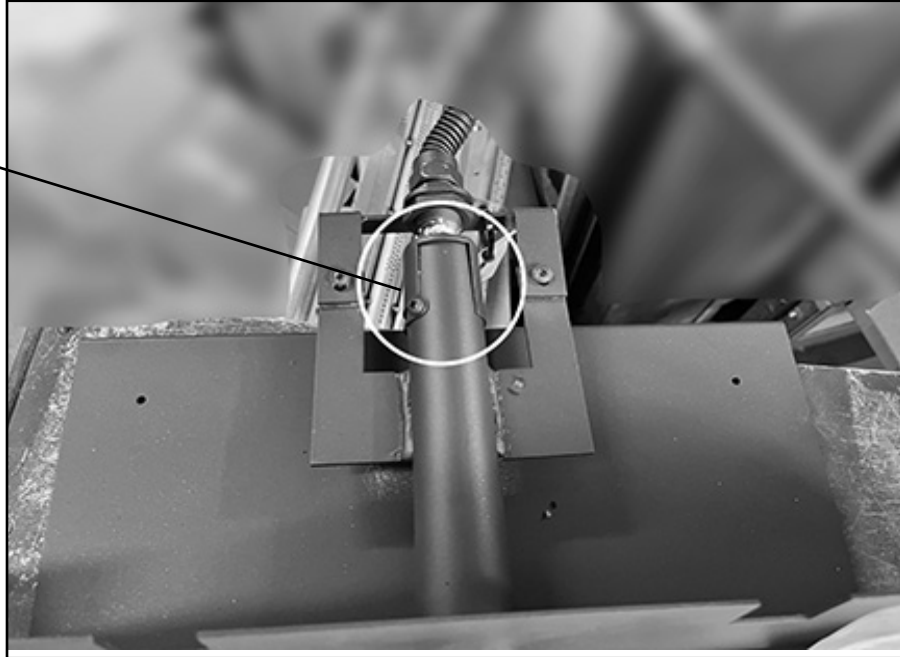


Figure 24: Shutter adjustment

1. Open and remove window frame and set aside. See "Window Frame Removal" section found in the Installation and Operating Instructions manual.
2. Remove the log set and set aside.
3. Loosen the screw in the Primary Air Shutter.
4. Rotate the shutter to increase or decrease the amount of primary air.
5. Reassemble in reverse order.

Gas Pressure Check

Note: To test the gas pressure, turn off the gas supply before removing the plug from the supply pressure test port or manifold pressure test port.

Verify gas pressures with the fireplace lit and on the highest setting.

1. Using a 3/16" Hex key , remove the plug from the pressure test port. The plug is located between the right side lintel and firebox side (Figure 24).
2. Thread the extension test fitting into the open port (Figure 25).
3. Attach a pressure gauge onto the fitting.
4. When testing is complete shut off the gas, remove the fitting and replace the plug. Thread sealant will be required to ensure a gas tight connection.



Figure 25: Removing manifold pressure plug.

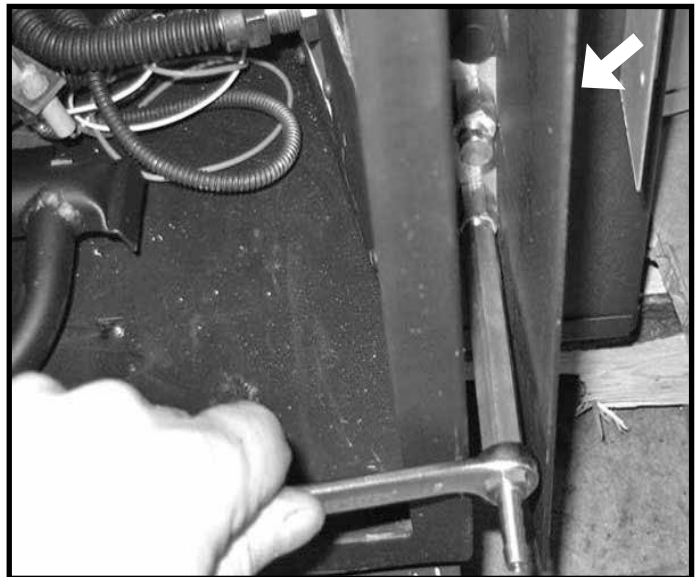


Figure 26: Adjusting manifold pressure.

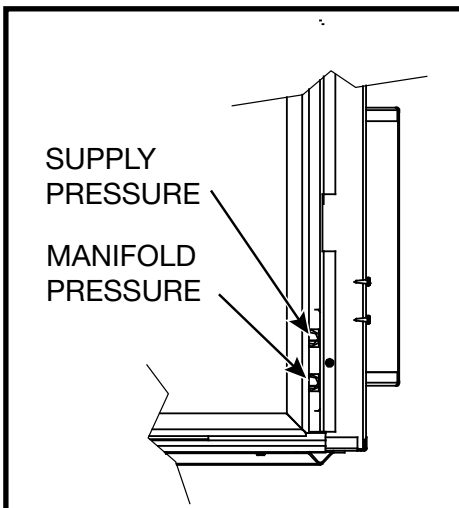


Figure 27: Gas test ports.

Correct gas pressure requirement:

| Supply Pressure | Natural Gas | Propane |
|--|-------------|----------|
| Min. Pressure <small>(For purpose of input adjustment)</small> | 5.0" WC | 12.5" WC |
| Max. Pressure | 13.9" WC | 13.9" WC |
| Manifold Pressure | | |
| Maximum | 3.5" WC | 10" WC |
| Minimum | 1.6" WC | 6.4" WC |

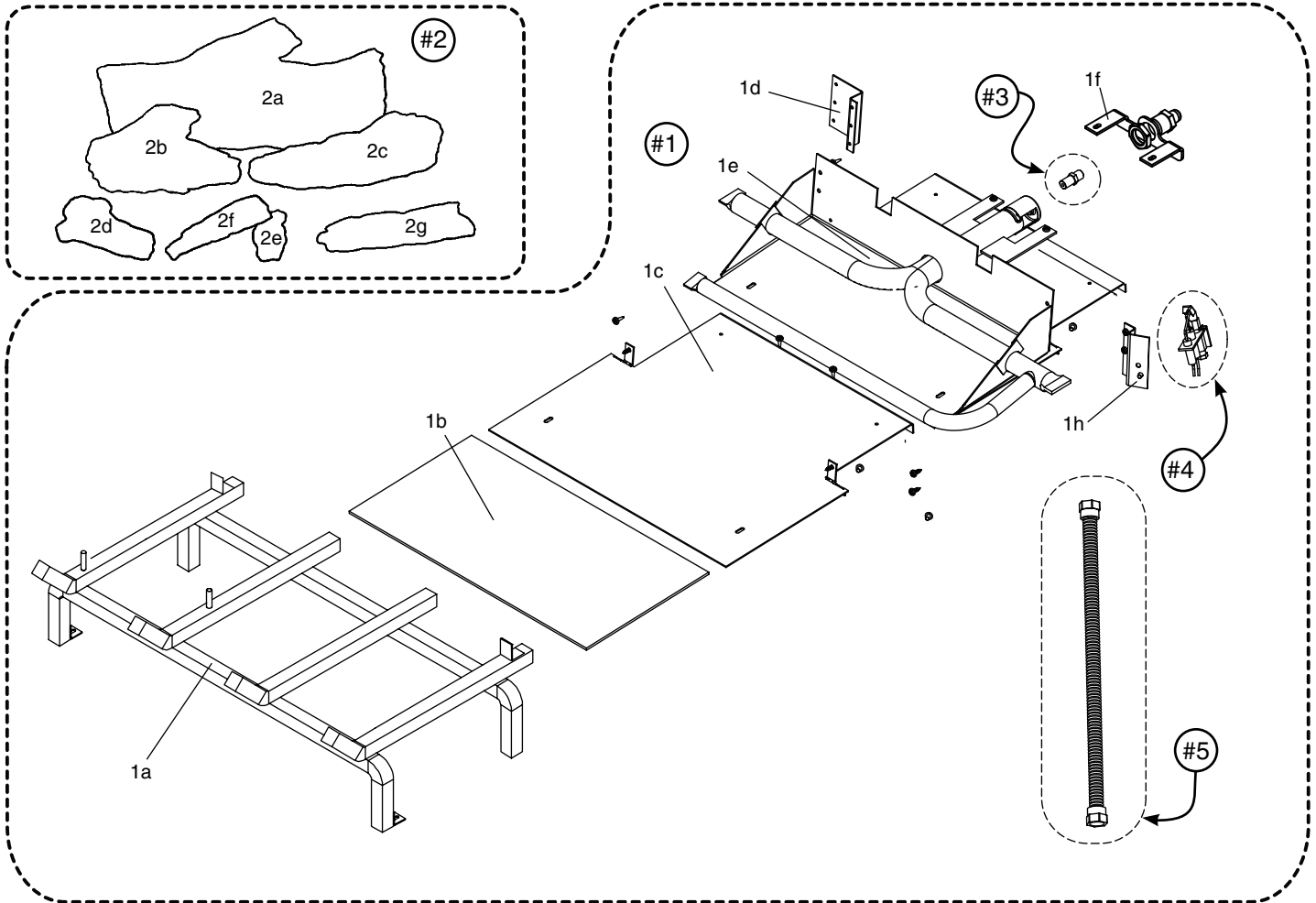
Parts Diagram

(WHEN ORDERING, INCLUDE PART NUMBER WITH DESCRIPTION)

| ITEM..... | DESCRIPTION..... | PART NO. |
|-----------|-----------------------------------|-----------------|
| #1..... | BURNER ASSEMBLY | 22150015 |
| #2..... | 7 PCS LOG SET(TC36) | 80001227 |
| #3..... | ORIFICE, NATURAL GAS | marked "NI" |

| ITEM..... | DESCRIPTION..... | PART NO. |
|-----------|--------------------------------------|-----------------|
| #4..... | PILOT ASSEMBLY | 80000522 |
| #5..... | MAIN SUPPLY TUBE (FLEX) | 80002875 |
| *#6..... | PROPANE CONVERSION KIT | 22180004 |

* NOT SHOWN



KIT CONTENTS:

#1.... BURNER ASSEMBLY

- 1a GRATE
- 1b BURNER INSULATION
- 1c BURNER TRAY SUPPORT SHIELD
- 1d PILOT SHIELD
- 1e TC42.NG01 BURNER WELD
- 1f MANIFOLD (80002854)
- 1g 1/2 PIPE TO 1/2 TUBE CONNECTION
- 1h PILOT BRACKET
- 2a LOG #1
- 2b LOG #2
- 2c LOG #3
- 2d LOG #4
- 2e LOG #5
- 2f LOG #6
- 2g LOG #7

- 3 ORIFICE, NATURAL GAS
- 4 PILOT ASSEMBLY
- 5 MAIN SUPPLY TUBE

#2.... 7 PCS LOG SET

- EMBER MATERIAL (Not shown)
- 2a LOG #1
- 2b LOG #2
- 2c LOG #3
- 2d LOG #4
- 2e LOG #5
- 2f LOG #6
- 2g LOG #7

#3.... ORIFICE, NATURAL GAS (NI)

#4.... PILOT ASSEMBLY, CONVERTIBLE

#5.... MAIN SUPPLY TUBE (FLEX)

#6.... PROPANE CONVERSION KIT (Not shown)

© 2023 Copyright Pacific Energy Fireplace Products LTD

Reproduction, adaptation, or translation
without prior written permission is prohibited,
except as allowed under the copyright laws.



For technical support, please call your retailer.

www.townandcountryfireplaces.net

2975 Allenby Rd., Duncan, BC V9L 6V8