

**INSTALLER: Leave this manual with the appliance.
CONSUMER: Retain this manual for future reference.**

These instructions are supplementary to the Installation and Operating Instructions supplied with the fireplace and should be kept together. Refer to the Installation and Operating Instructions for proper gas supply, safety requirements and operating instructions



TOWN & COUNTRY
L U X U R Y F I R E P L A C E S

TC36 HEARTWOOD BURNER INSTALLATION INSTRUCTIONS



**PART#
TC36.NG05C
FOR TC36 & TC36 AR
Series C**



Contents of Package

- BURNER ASSEMBLY
(including pilot and manifold)
- LOG GRATE
- TC36 HEARTWOOD LOGS
- EMBER MATERIAL
- HARDWARE PACKAGE
- COAL CHUNKS
- VERMICULITE



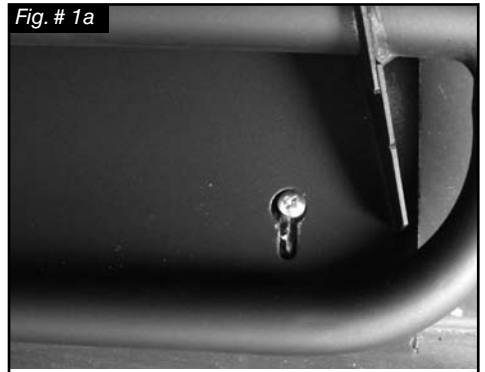
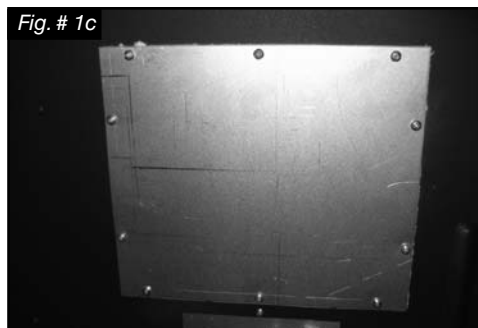
Burner Installation

If this fireplace is to be used on Propane please convert prior to installtion. See pages 10 – 12.

1. Place the keyhole slots in the burner over the two screws located in the firebox base. (Fig. #1 & 1a)
2. Slide the burner back to engage the screws in the small part of the keyhole slot and tighten screws. (Fig. #1b)
3. Remove access cover from side of firebox(Fig. #1c)

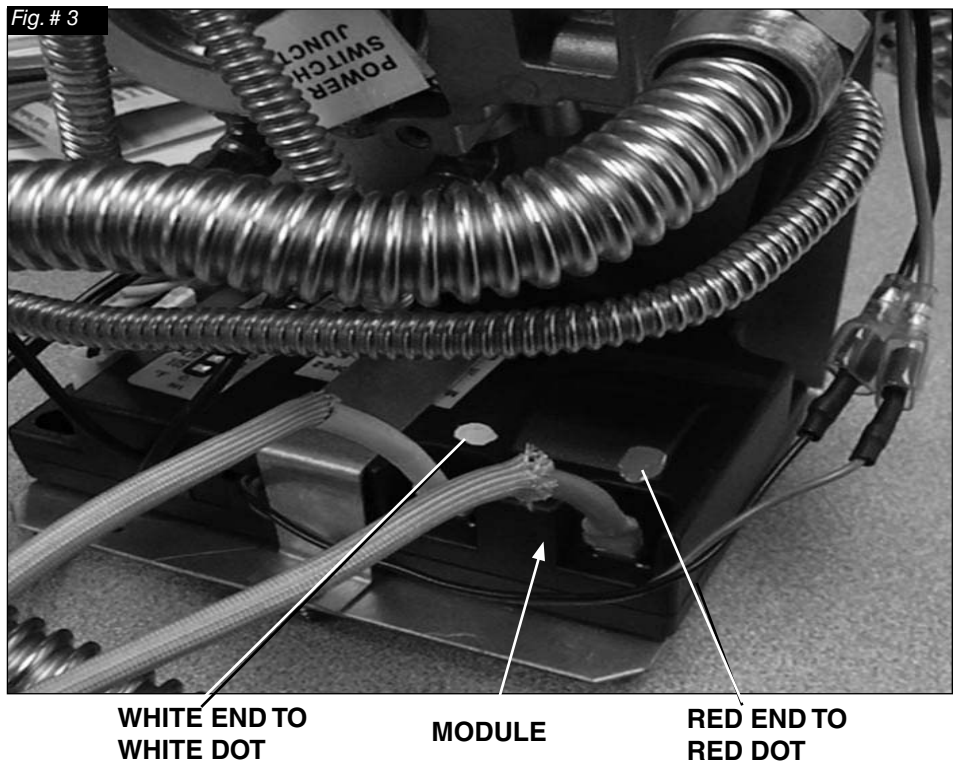
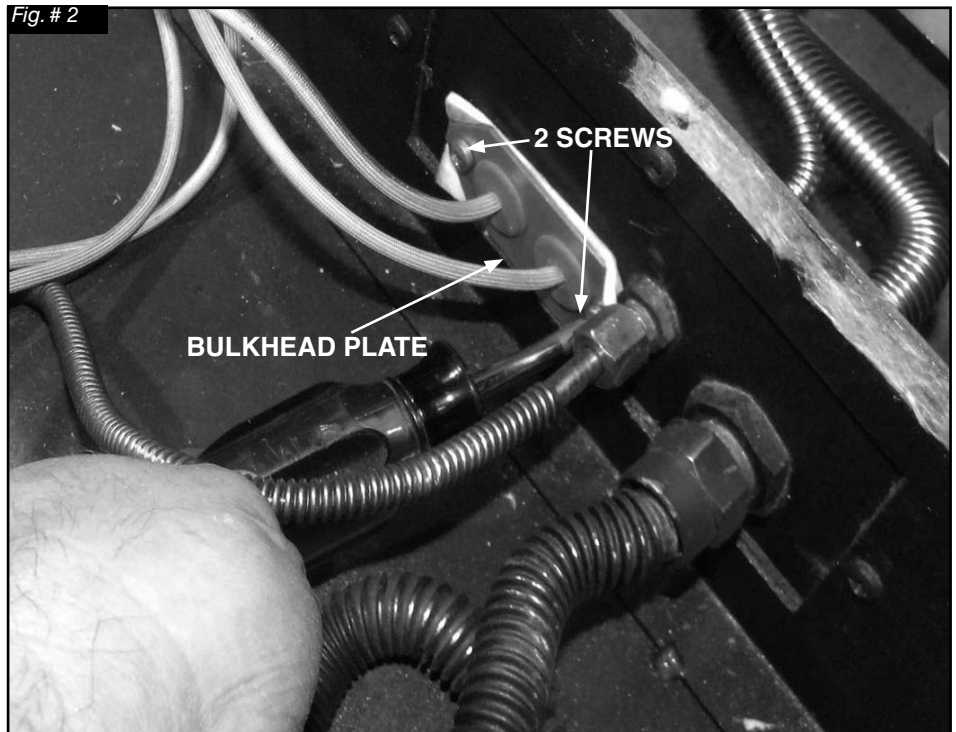


SCREWS



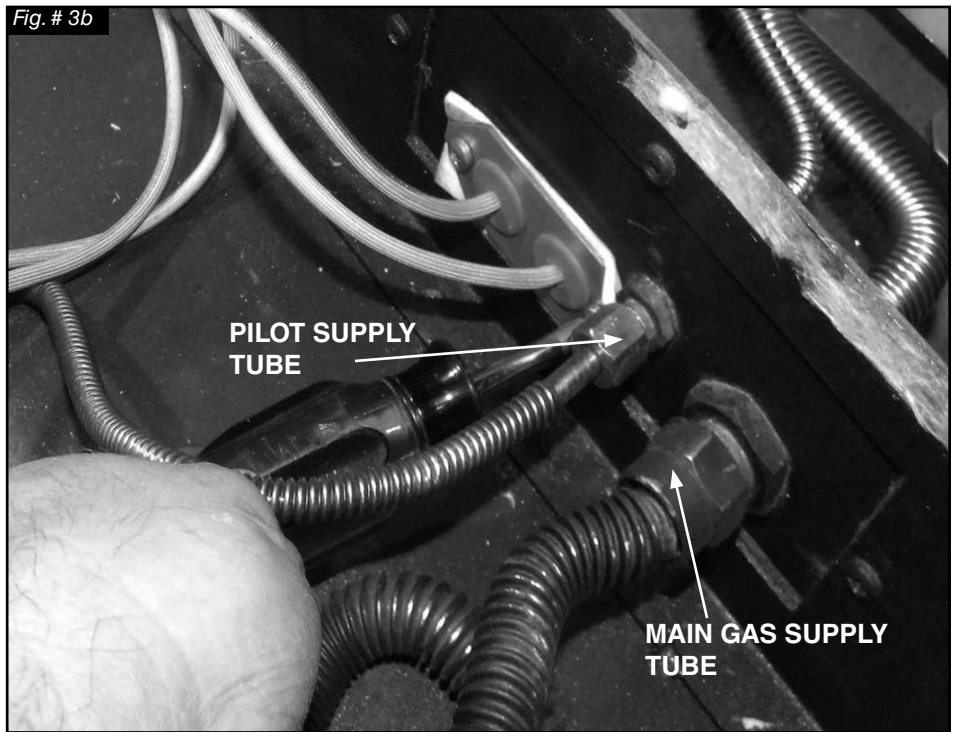
Burner/ Grate Installation

- Secure the electrical bulkhead plate and gasket to the firebox. (2 screws) Attach the ignition and sensor wires to the module. Red end to the connector marked by the red dot, white end to the connector marked by the white dot
Fig.#2 & Fig.#3



5. Attach the pilot and gas supply tubes to the bulk head fitting and tighten. (Fig. # 3b) Ensure the connections are gas tight. Conceal the spark and sensor wires below the supply tubes.

A panel set must now be installed. See Installation and Operating Instructions manual for details.



6. Position the slots of the grate securing brackets over the holes in the floor shield and secure with the two screws (Fig. # 4).



Ember Material

A large bag of ember material is shipped with the fireplace and needs to be installed on the burner to ensure optimum performance and flame appearance. A bag of coal chunks and lava rock is also supplied this must only be used **around** the burner pan to cover up the gas lines and brackets.

1. Pull apart the material into ember size pieces (approximately 1" squares) and gently place them into the burner pan. Do not compress, leave them loose for best performance.
2. Fill the burner pan with embers until level with the top of the pan at rear, and gradually slope forward to the firebox floor at the front, covering both burner tubes.
3. Place remaining ember material, coal chunks and lava rock outside of the burner pan as desired to cover-up gas lines and brackets. **Do not put coal chunks or lava rock inside burner pan as this will cause sooting and the burner to malfunction.**

Note:

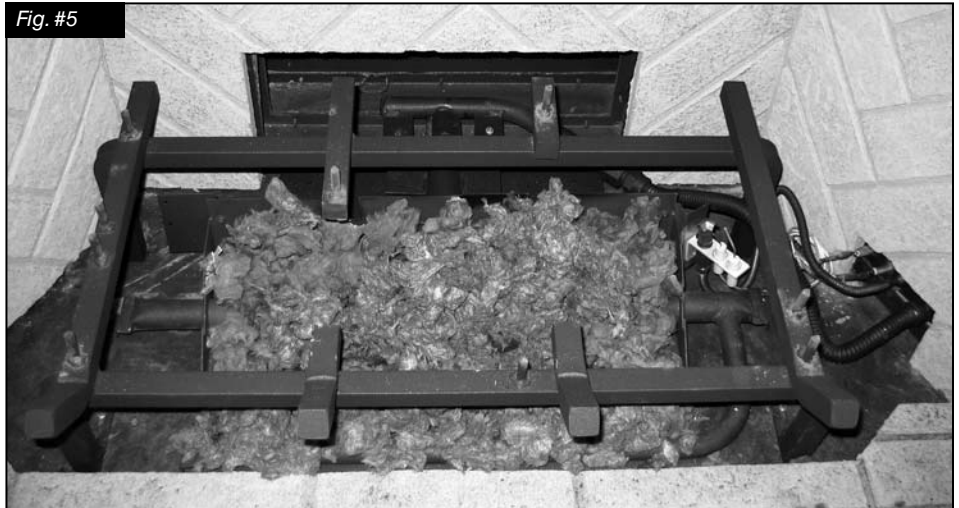
Ember material placement and amount will affect flame appearance.

More ember material results in lower flame height.

Add or remove as needed until desired flame affect.

Reduce the amount used on Propane models, as too much will create soot

Fig. #5



Embers only in this area.

Fig. #6



Embers, coal chunks and lava rock.

Log Placement

Gas plumbing and vent connections should be completed before proceeding.

The logs are fragile, and should be handled with care. Unpack and inspect log set. There should be a total of seven logs.

Position the logs as indicated by the following pictures. The seven main logs have holes and/or pins. Engage each pin in the corresponding holes. The remaining two logs do not have holes or pins. They rest in position. Locate as per the diagrams (fig. # 7-15)

Note: Improper placement of logs will cause sooting on internal parts and glass. The logs may need to be repositioned slightly to avoid excessive flame impingement.

Fig. # 7

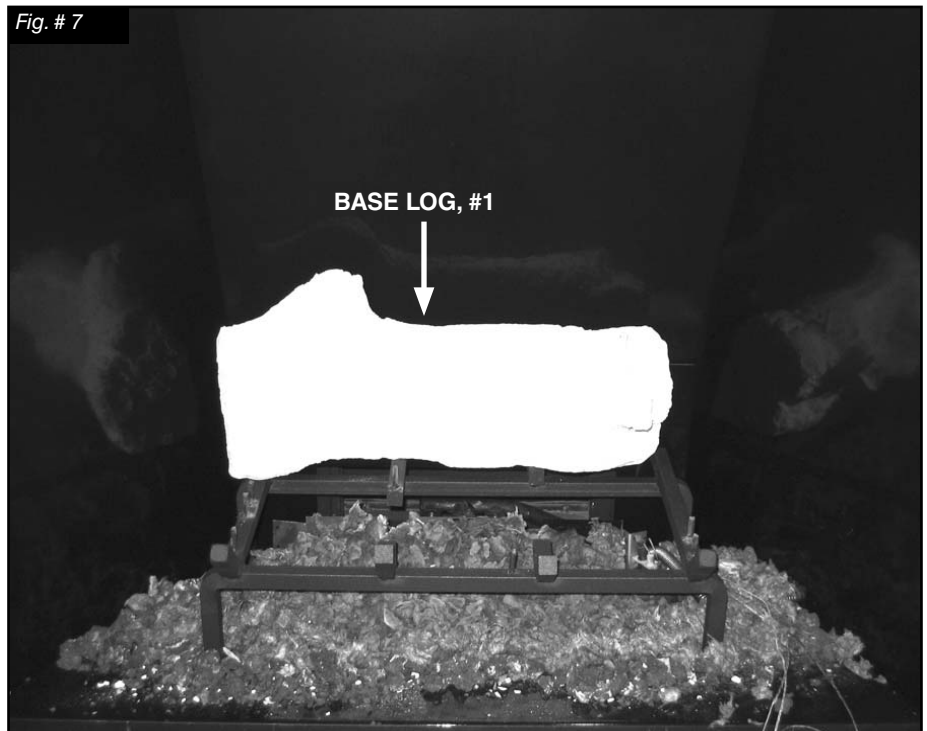


Fig. # 8



Fig. #9



Fig. #10

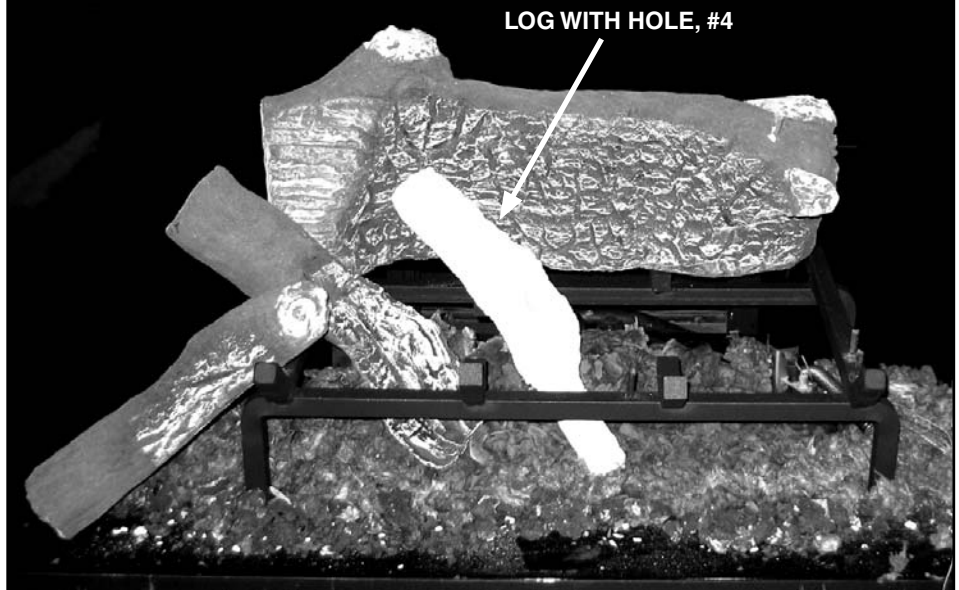


Fig. #11

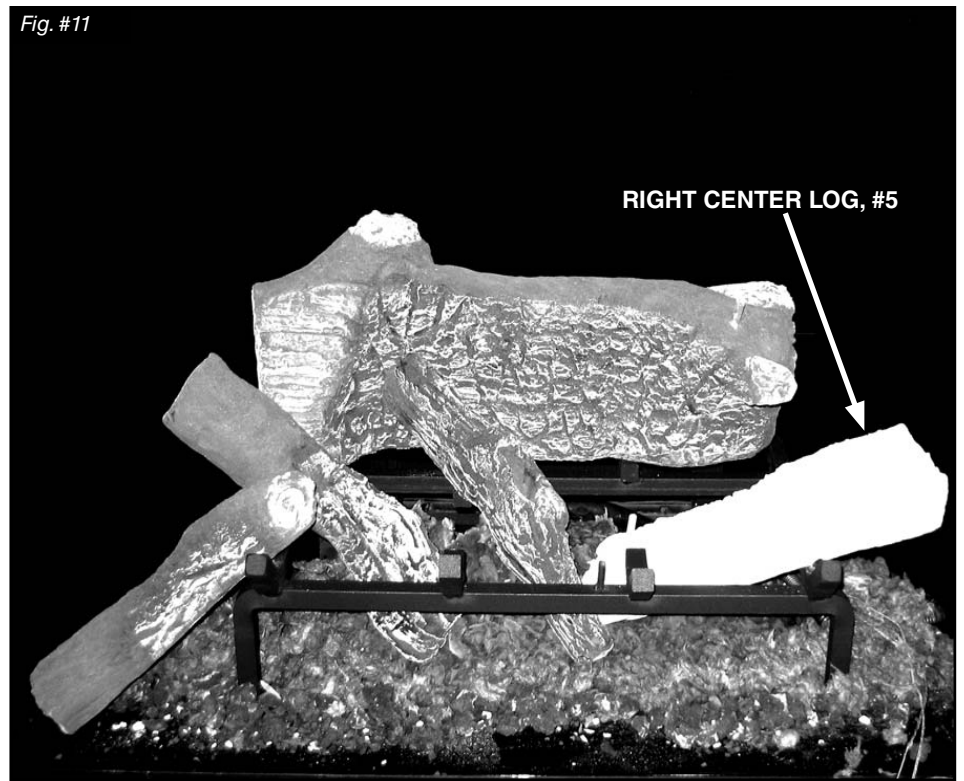


Fig. #12

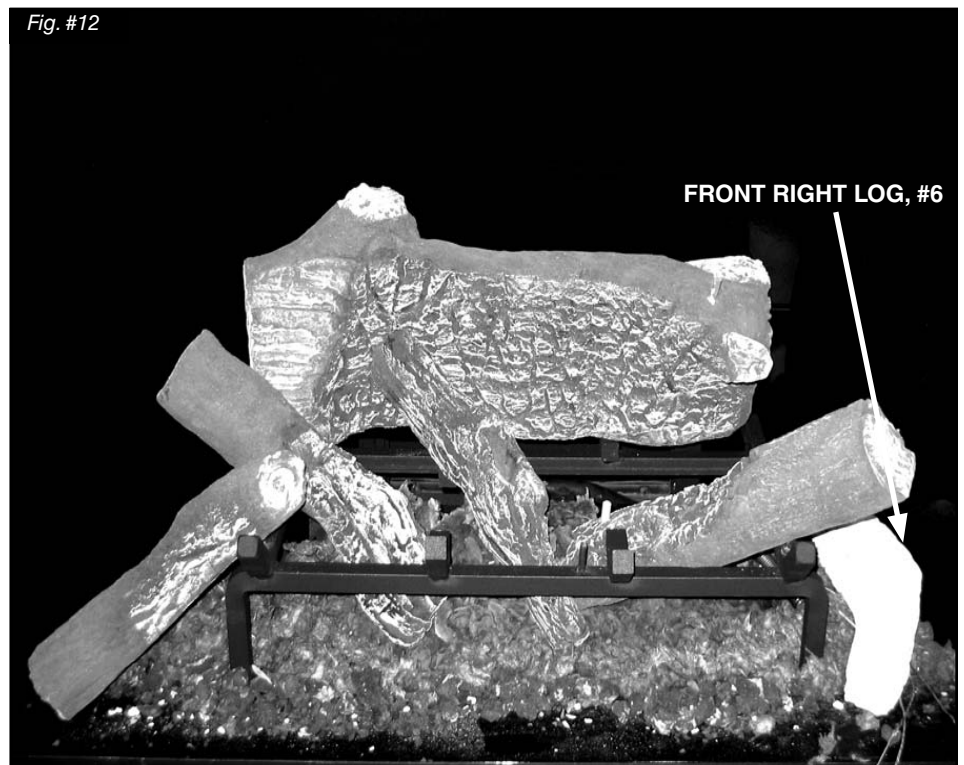


Fig. #13

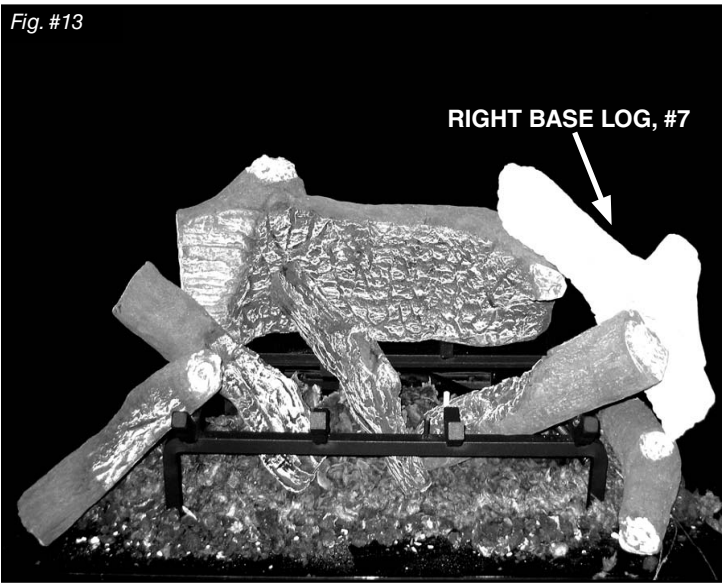


Fig. #14

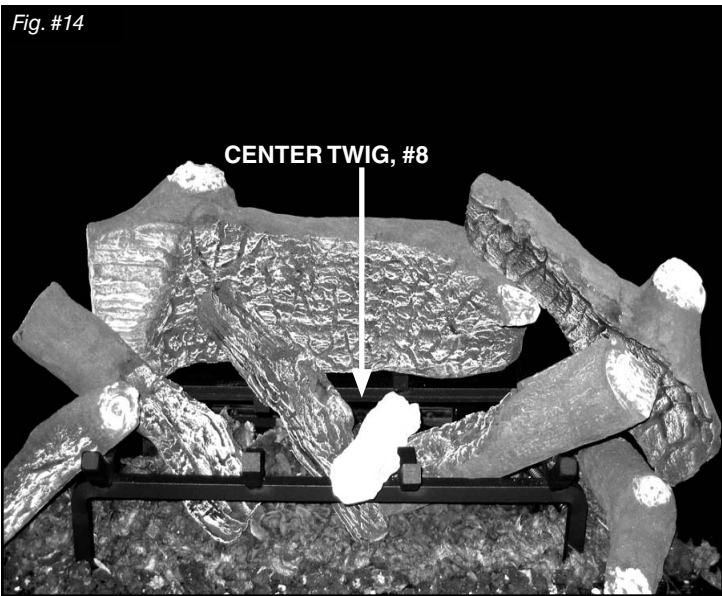
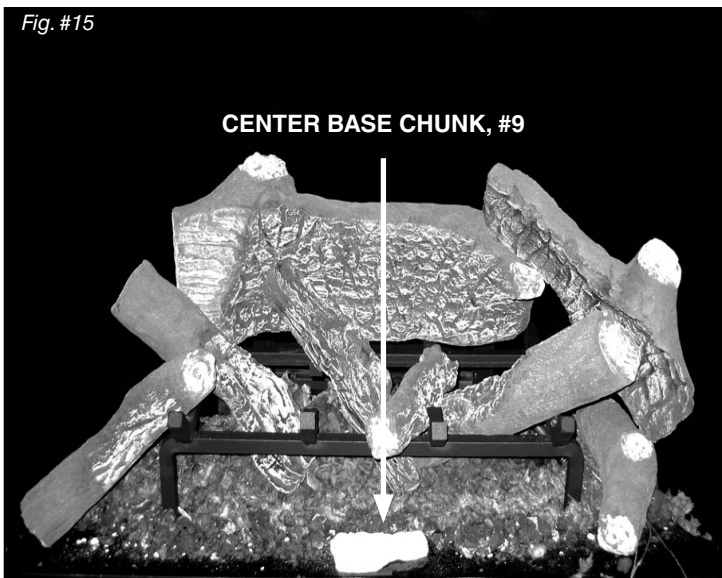


Fig. #15



Propane Conversion

If the unit is to be used on propane, convert as follows using the components supplied with this fireplace:



For use with model:
Pour utilise avec du modèle:

TC36

Date: _____

By / Par: _____



LP GAS/ DU GAZ LP

12.5 in/wc / 12.5 po/c.e.

(3.11 kPa)

13.9 in/wc / 13.9 po/c.e.

(3.45 kPa)

11.0 in/wc / 11.0 po/c.e.

(.95 kPa)

45 (2.08 mm)

Max.: 47,000 (13.8)

Min.: 35,000 (10.3)

This appliance was converted to PROPANE GAS with this kit on this date by the organization which accepts the responsibility that this conversion has been properly made.

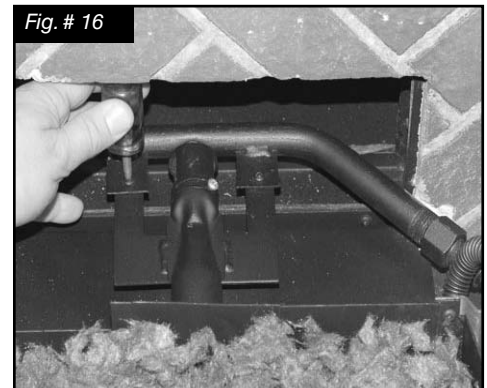
Cet appareil est converti au gaz LP par l'emploi de la trousse de conversion par une organisation qui accepte la responsabilité pour une installation en bon état.

280906 6-TC36 5052.5208

CONVERSION LABEL (5052.5208)

Note: Factory supplied components must be used to ensure correct input. After conversion confirm proper manifold pressure.

1. Ensure the burner, pilot and gas supply are turned off, and the appliance has cooled.
2. Remove the two screws securing the manifold assembly to the burner. (Fig. #16)
3. Remove the manifold assembly from the burner. (Fig. #17)
4. With a 1/2" wrench remove the natural gas orifice (#30) and replace with propane orifice (#45) (our part # 5021.34) (Fig. #18)
5. Fully open the primary air shutter.
6. Reinstall the manifold assembly and air deflector.



WARNING

This conversion kit shall be installed by a qualified service agency in accordance with the manufacturer's instructions and all applicable codes and requirements of the authority having jurisdiction.

If the information in these instructions is not followed exactly, a fire, explosion or production of carbon monoxide may result causing property damage, personal injury or loss of life.

The qualified service agency is responsible for the proper installation of this kit.

The installation is not proper and complete until the operation of the converted appliance is checked as specified in the manufacturer's instructions supplied with the kit.

CAUTION

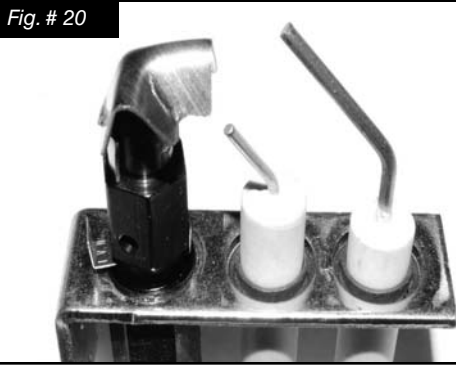
The gas supply and electrical power must be shut off before proceeding with the conversion.

Fig. # 19



7. With a 7/16" wrench loosen the pilot head on the pilot assembly by a half-turn (Fig. #19)

Fig. # 20



8. Slide the pilot adjustment band over and ensure that the hole in the orifice band is showing. (Fig. #20 shows NG position, Fig. # 21 shows LP position)

Fig. #21

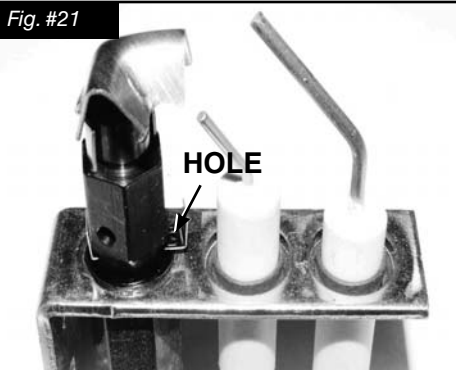
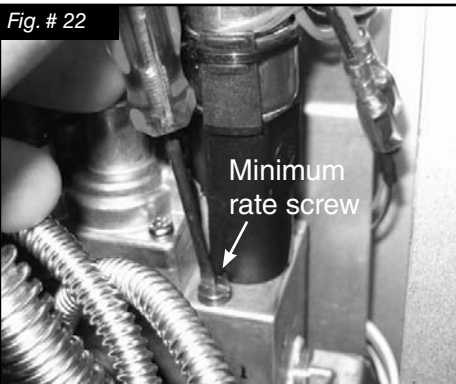


Fig. # 22



9. Remove the minimum rate screw located in the valve. (Fig. #22)

- Replace the minimum rate screw with the one provided in the propane conversion kit supplied with this fireplace. Ensure that the screw is fully installed. (Fig. #23)



- Remove the aluminum cap from the top of the pressure regulator. (Fig. #24)



Fig #24a ADD DATE ADD NAME

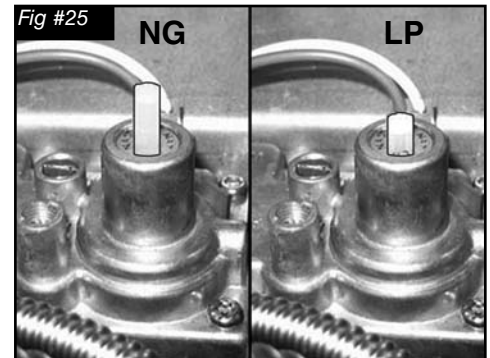
For use with model: **TC36**
 Pour utiliser avec du modèle:

Date: _____

By / Par: _____ **PACIFIC ENERGY**

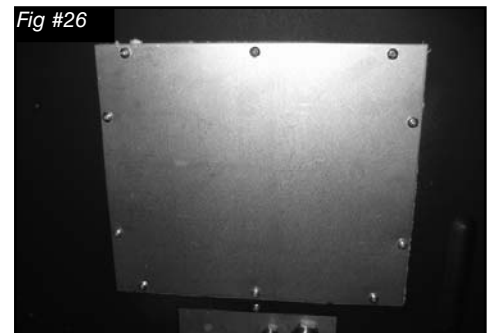
LP GAS/ DU GAZ LP	This appliance was converted to PROPANE GAS with this kit on this date by the organization which accepts the responsibility that this conversion has been properly made. Cet appareil est converti au gaz LP par l'emploi de la trousse de conversion par une organisation qui accepte la responsabilité pour une installation en bon état.
12.5 in/wc / 12.5 po/c.e. (3.11 kPa)	
13.9 in/wc / 13.9 po/c.e. (3.45 kPa)	
11.0 in/wc / 11.0 po/c.e. (.95 kPa)	
# 45 (2.08 mm)	
Max.: 47,000 (13.8) Min.: 35,000 (10.3)	280906 6-TC36 5052.5208

- Press down on the center post and rotate 90°. The center post should stay down. (Fig. #25). Replace the aluminum cap.



- Fill in the date and the name of the person who performed the conversion in the white area on the conversion label. Peel off the protective backing and apply the conversion label directly over the gas specifications on the rating label.

- Attach the access panel to the side of the firebox with the previously removed screws. (Fig. #26)



Note:
Gasket must be installed with access panel.

Gas Pressure Check

Note: To test the gas pressure, turn off the gas supply before removing the plug from the supply pressure test port or manifold pressure test port.

Verify gas pressures with the fireplace lit and on the highest setting.



1. Remove the plug from the manifold test port. The plug is located between the right side lintel and firebox side (bottom port). (Fig. # 27)



2. Thread the extension test fitting into the open test port. (Fig. #28)
3. Attach a pressure gauge onto the fitting.
4. When testing is complete remove the extension test fitting and replace the plug. Thread sealant will be required to ensure a gas-tight connection.

Correct gas pressure requirement:

Supply Pressure
(For purpose of input adjustment)

Natural Gas

Propane

Minimum

5.0" WC

12.5" WC

Maximum

13.9" WC

13.9" WC

Manifold Pressure

Maximum

3.8" WC

11.0w" WC

Minimum

2.1" WC

5.5" WC

Flame Adjustment

The air shutter on the burner tube controls the primary combustion air to the gas burner and is preset at the factory for natural gas fuel. Some adjustment may be necessary to obtain desired flame and to eliminate carbon deposits. Evaluate flame appearance after the fireplace has reached operating temperature. See Fig. #29 for proper flame pattern.

Open primary air shutter if the logs, glass, and firebox have carbon accumulation and / or the flames are long, dark and stringy. The shutter may also be opened to enhance the Ember Material glow and lessen the flame height.

Caution: Burner area may be hot!

Turn off the fireplace and allow the unit to cool before proceeding.

Caution: Proper air shutter setting is a must.

The flame should be just orange and "lazy". It should NEVER be set to create sooting on internal parts and glass.

To Adjust:

1. Open and remove window frame and set aside. See "Window Frame Removal" section found in the Installation and Operating Instructions manual.
2. Remove the log set and set aside.
3. Loosen the screw in the Primary Air Shutter.
4. Rotate the shutter to increase or decrease the amount of primary air.
5. Reassemble in reverse order.

Fig. # 29



Fig. # 31



Replacement Parts

(WHEN ORDERING, INCLUDE PART NUMBER WITH DESCRIPTION)

ITEM.....DESCRIPTION.....PART NO.

#1.....TC36.NG05 BURNER ASSEMBLY TC36.NG05C2

#2.....9 PCS LOG SET 5098.74611

#3.....ORIFICE, NATURAL GAS (#30)..... 5022.13

ITEM.....DESCRIPTION.....PART NO.

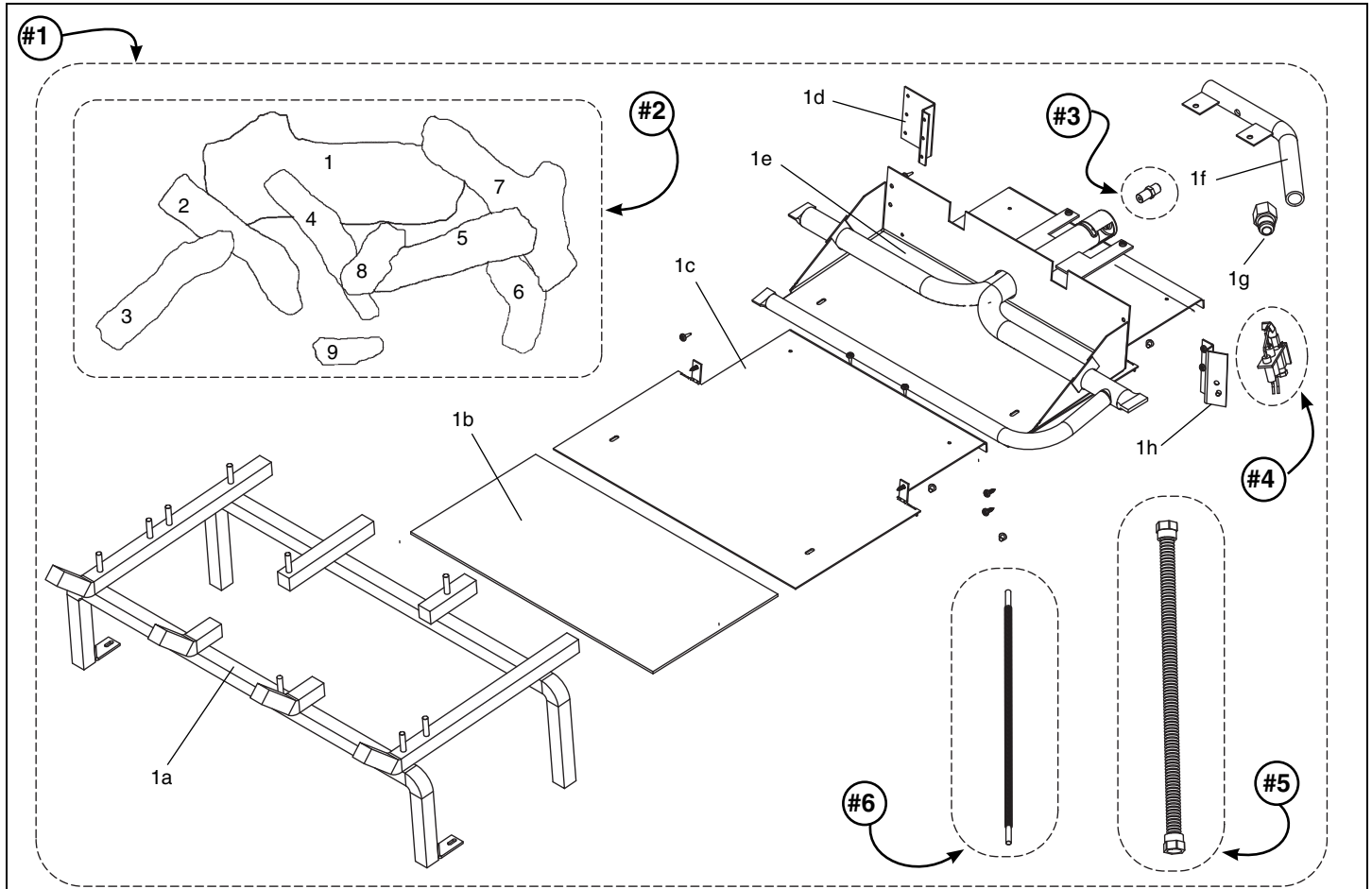
#4.....PILOT ASSEMBLY..... TCRP.5005025

#5.....MAIN SUPPLY TUBE (FLEX)..... 5019.223

#6.....PILOT TUBE (FLEX)..... 5019.225

* #7.....PROPANE CONVERSION KIT TC36.LPCEO1

* NOT SHOWN



KIT CONTENTS:

#1.... BURNER ASSEMBLY

- 1a GRATE
- 1b BURNER INSULATION
- 1c BURNER TRAY SUPPORT SHIELD
- 1d PILOT SHIELD
- 1e TC36.NG01 BURNER WELD
- 1f MANIFOLD
- 1g 1/2 PIPE TO 1/2 TUBE CONNECTION
- 1h PILOT BRACKET
- 2a BASE LOG (a)
- 2b LEFT CENTER LOG (b)
- 2c LEFT FRONT LOG (c)
- 2d LOG WITH HOLE (d)
- 2e RIGHT CENTER LOG (e)
- 2f FRONT RIGHT LOG (f)
- 2g RIGHT BASE LOG (g)
- 2h CENTER TWIG (h)
- 2i CENTER BASE CHUNK (i)

#3.... ORIFICE, NATURAL GAS (#30)

- 3 ORIFICE, NATURAL GAS
- 4 PILOT ASSEMBLY
- 5 MAIN SUPPLY TUBE
- 6 PILOT TUBE

#2.... 9 PCS LOG SET

- EMBER MATERIAL (Not shown)
- 1 BASE LOG
- 2 LEFT CENTER LOG
- 3 LEFT FRONT LOG
- 4 LOG WITH HOLE
- 5 RIGHT CENTER LOG
- 6 FRONT RIGHT LOG
- 7 RIGHT CENTER LOG
- 8 CENTER TWIG
- 9 CENTER BASE CHUNK

#3.... ORIFICE, NATURAL GAS (#30)

#4.... PILOT ASSEMBLY, CONVERTIBLE

#5.... MAIN SUPPLY TUBE (FLEX)

#6.... PILOT TUBE (FLEX)

#7.... PROPANE CONVERSION KIT (Not shown)



TOWN & COUNTRY
L U X U R Y F I R E P L A C E S

TECHNICAL SUPPORT: 1-250-748-1184
www.townandcountryfireplaces.net
2975 Allenby Rd., Duncan, BC V9L 6V8