

INSTALLER: Leave this manual with the appliance.

CONSUMER: Retain this manual for future reference.

These instructions are supplementary to the Installation and Operating Instructions supplied with the fireplace and should be kept together. Refer to the Installation and Operating Instructions for proper gas supply, safety requirements and operating instructions



TOWN & COUNTRY
LUXURY FIREPLACES

**TC42
COUNTRY HOME
BURNER KIT
INSTALLATION
INSTRUCTIONS
(NATURAL GAS ONLY)**



**SKU# 22150037
For TC42 Fireplaces**



Visit www.townandcountryfireplaces.net for the most recent version of this manual

Contents of Package

- 2 bags of ember material
- 7 Piece log set
- Log grate
- Burner assembly (including pilot and manifold)
- Hardware package (not shown)
- Air deflector



Figure 1: TC42 NG02 kit contents

Burner Installation

1. Place the keyhole slots in the burner (Figure 2) over the two screws located in the firebox base (Figure 3).
2. Slide the burner back to engage the screws in the small part of the keyhole slot and tighten screws.
3. Remove the valve control box access cover from side of firebox (Figure 4).



Figure 2: Attaching burner to floor of fireplace.

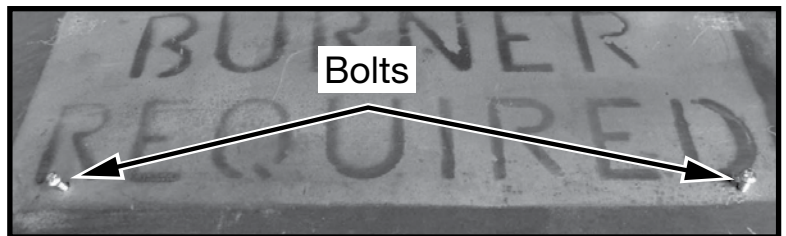


Figure 3: Screws for burner.



Figure 4: Control center access cover.

4. Attach the manifold and pilot supply tubes to the bulk head fitting and tighten (Figure 5).

Ensure that all connections are gas tight.

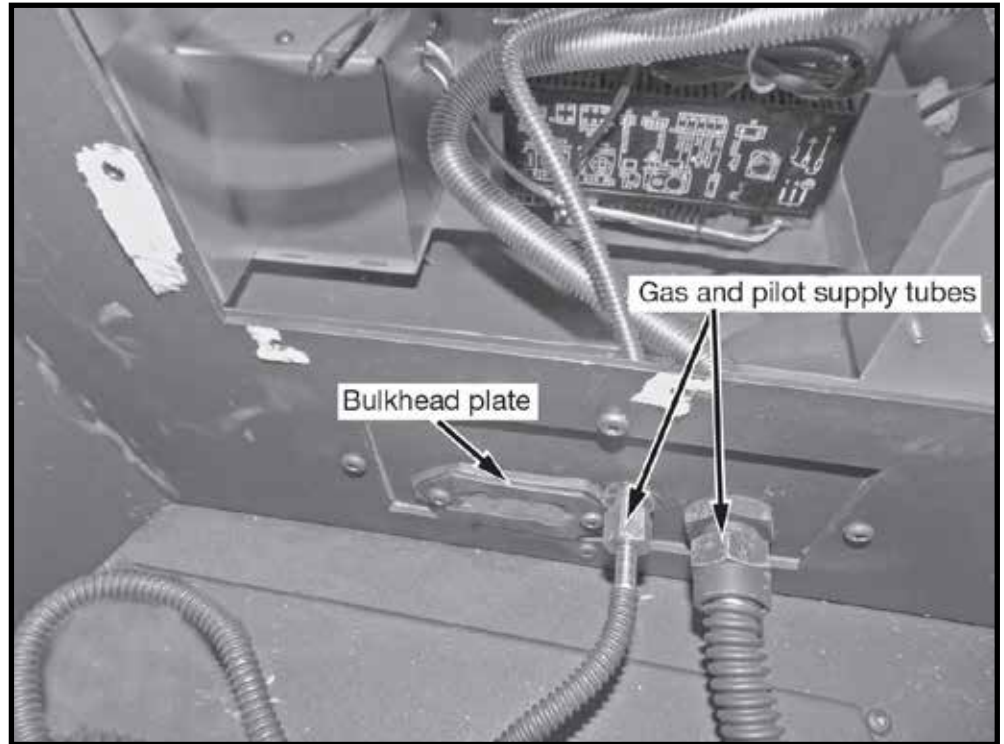


Figure 5: Gas and pilot supply tubes.

5. Feed the ignition and sensor wires through the bulkhead plate (Figure 6) to the interface.

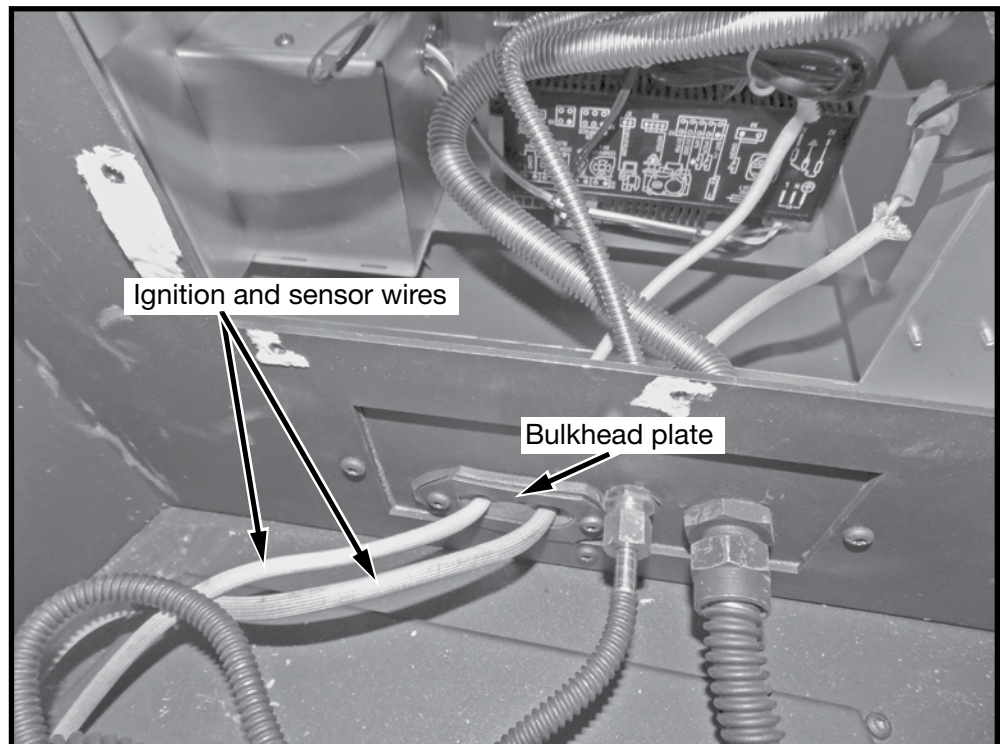


Figure 6: Ignition and sensor wires routing.



6. Attach the ignition and sensor wires to the module (Figure 7)

7. Reinstall the access panel to the firebox side.

A panel set must now be installed. See Installation and Operating Instructions manual for details.

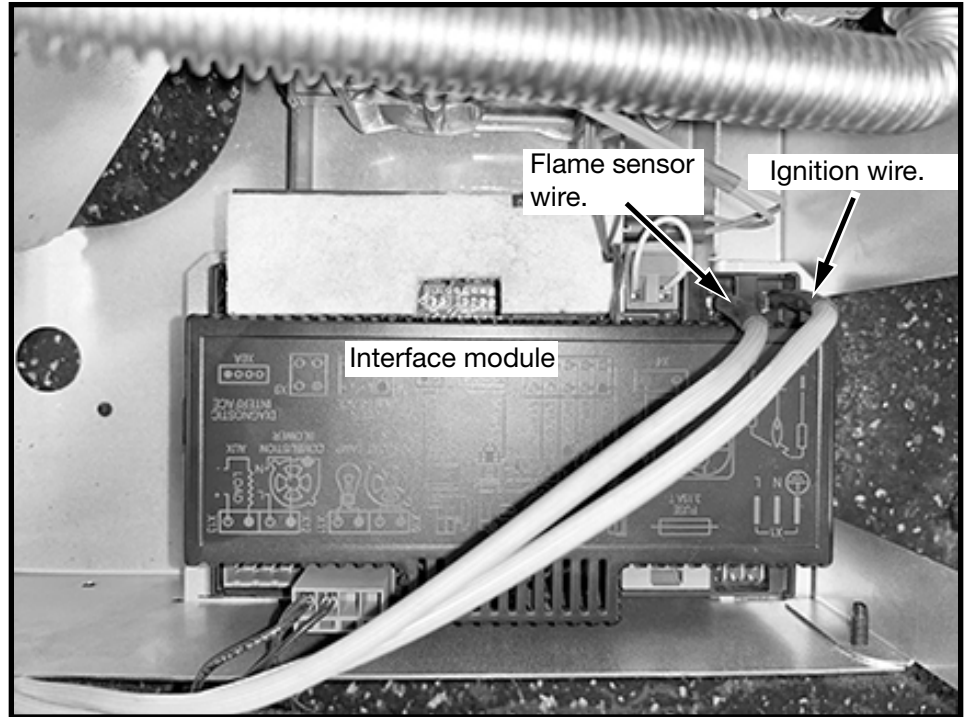


Figure 7: Interface module.

8. Position the slots of the grate securing brackets over the holes in the floor shield and secure with the two screws (Figure 8).



Figure 8: Securing the grate.

9. Attach rear deflector to rear of grate using the two screws provided (Figure 9).



Figure 9: Rear deflector.

Ember Material Placement

Two bags of ember material are shipped with the fireplace and need to be installed to ensure optimum performance and flame appearance.

Pull apart the material into ember size pieces (approximately 1" squares) and gently place them into the burner pan. Do not compress, leave it loose for best performance.

Fill the burner pan level with the top of the pan at rear, and gradually slope forward to the firebox floor at the front, covering both burner tubes. (Figure 10)

Place remaining ember material outside of the burner pan as desired to cover-up gas lines and brackets.

Note: Ember material placement and amount will affect flame appearance. More ember material results in lower flame height. Add or remove as needed until desired flame affect.

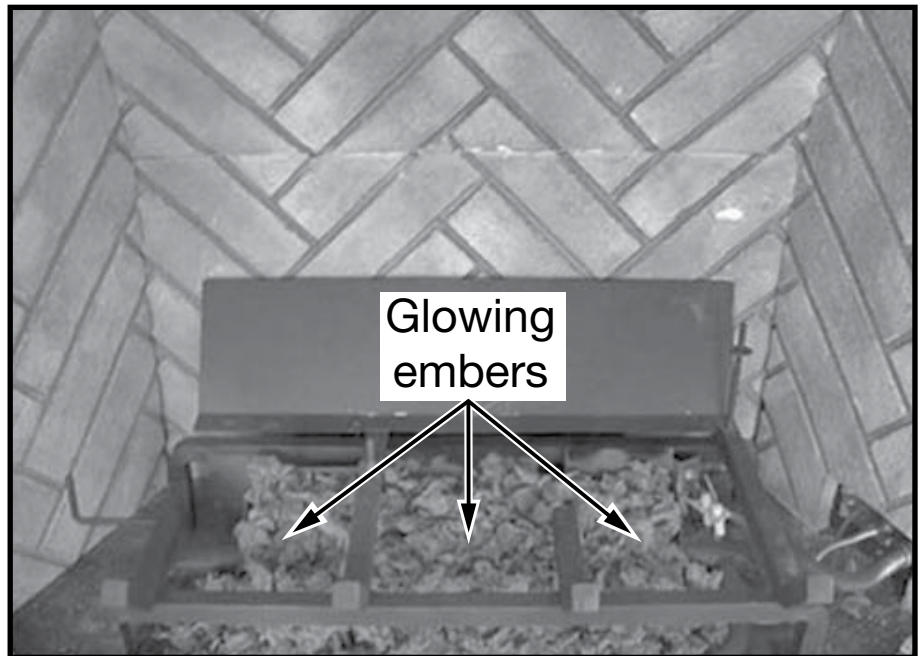
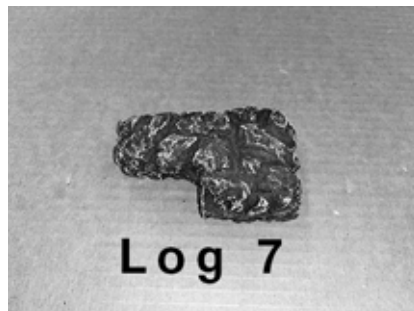
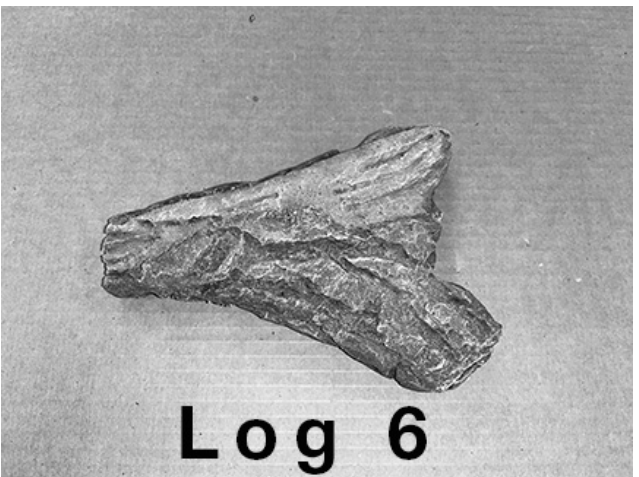
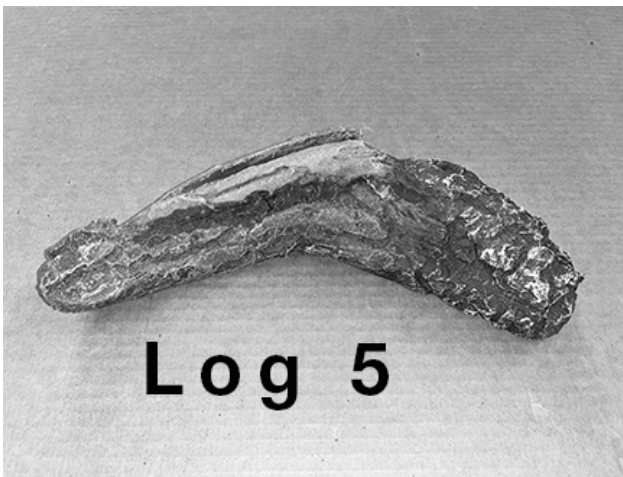
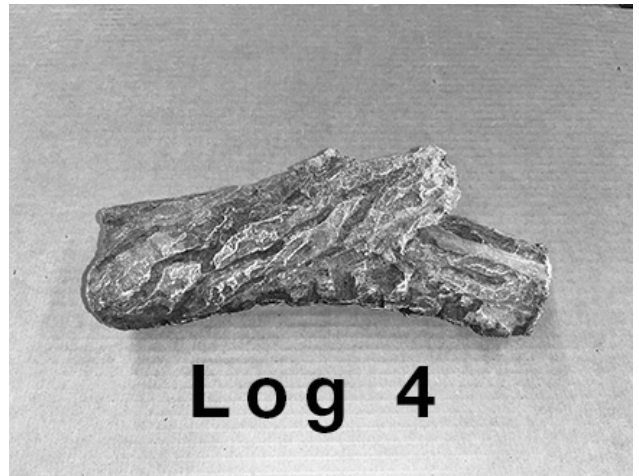
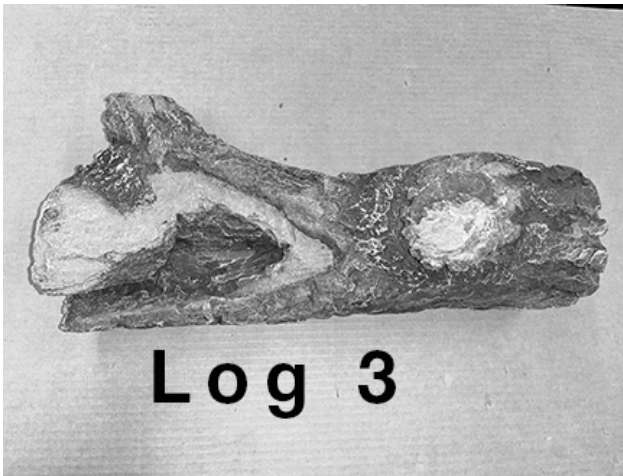
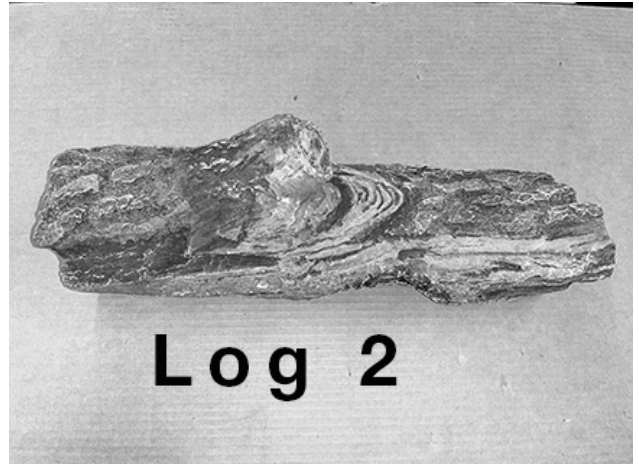
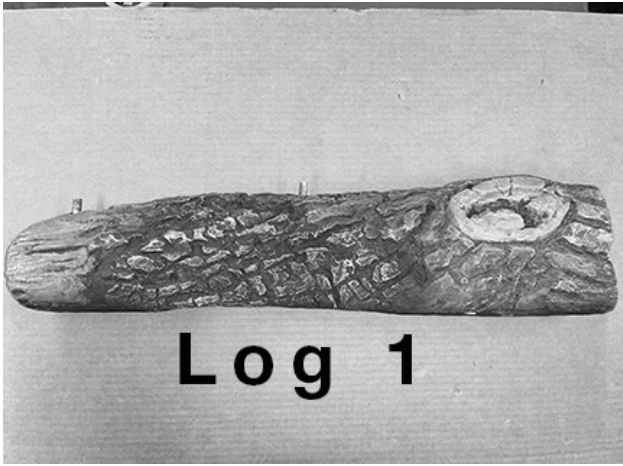


Figure 10: Ember placement.



Log Set and Assembly



Gas plumbing and vent connections should be completed before proceeding.

The logs are fragile, and should be handled with care. Unpack and inspect log set. There should be a total of seven logs.

Position the logs as indicated by the following pictures. The three main logs have holes and / or pins. Engage each pin in the corresponding holes. The four smaller logs do not have holes or pins. They rest in position. Locate as per the diagrams (Figures 11-18).

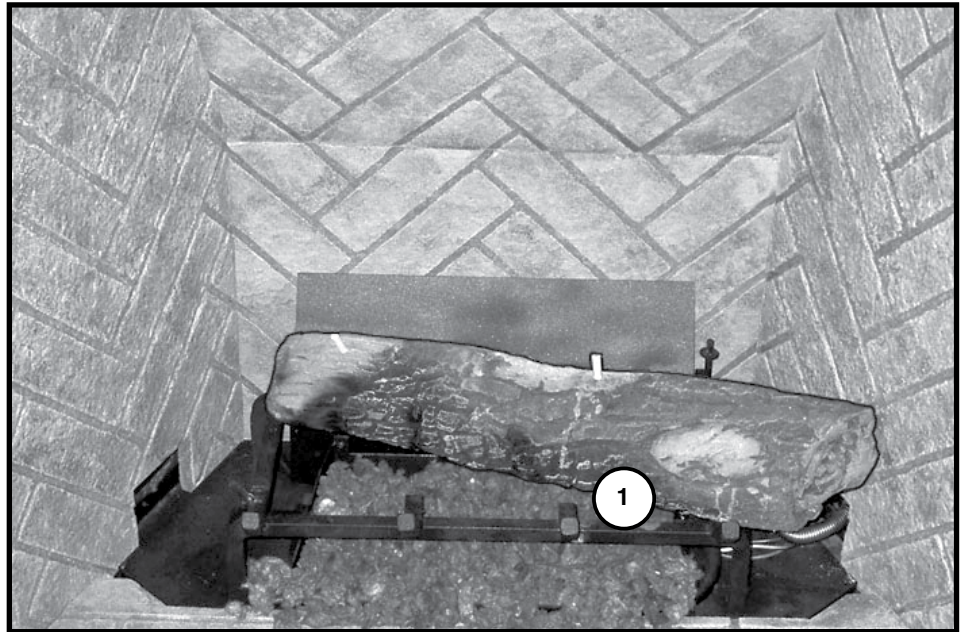


Figure 11: First log placement.

1. Place Log 1 onto the log grate with the thicker end on the right and engage the holes in the bottom of the log onto the two pins on the log grate.

2. Place Log 2 onto the left side of the log grate with the thicker end down and rest the log onto the long pin on the side of the log grate then engage the hole in the bottom of Log 2 onto the pin in the top left of Log 1.

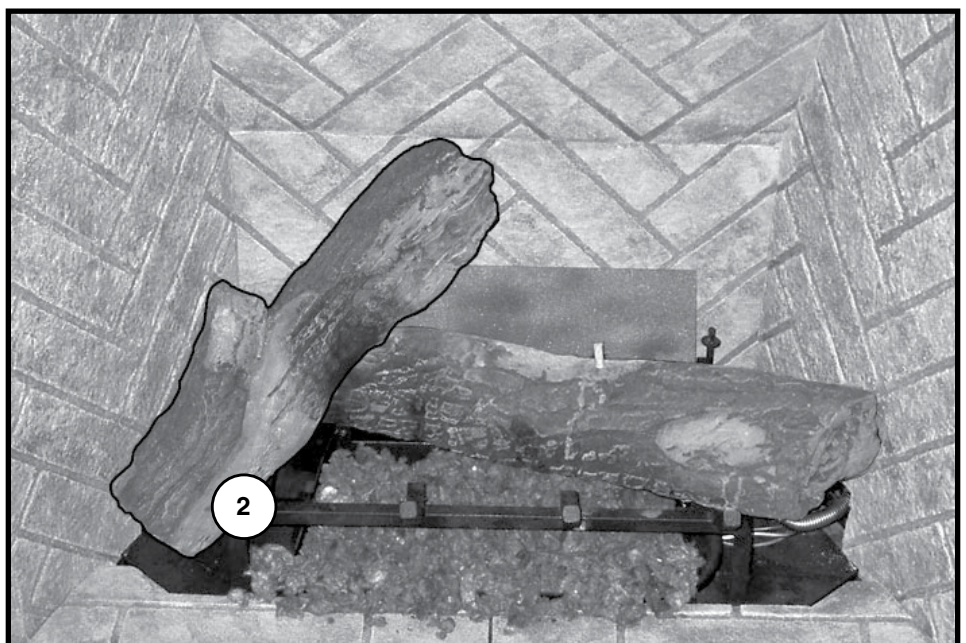


Figure 12: 2nd log placement.



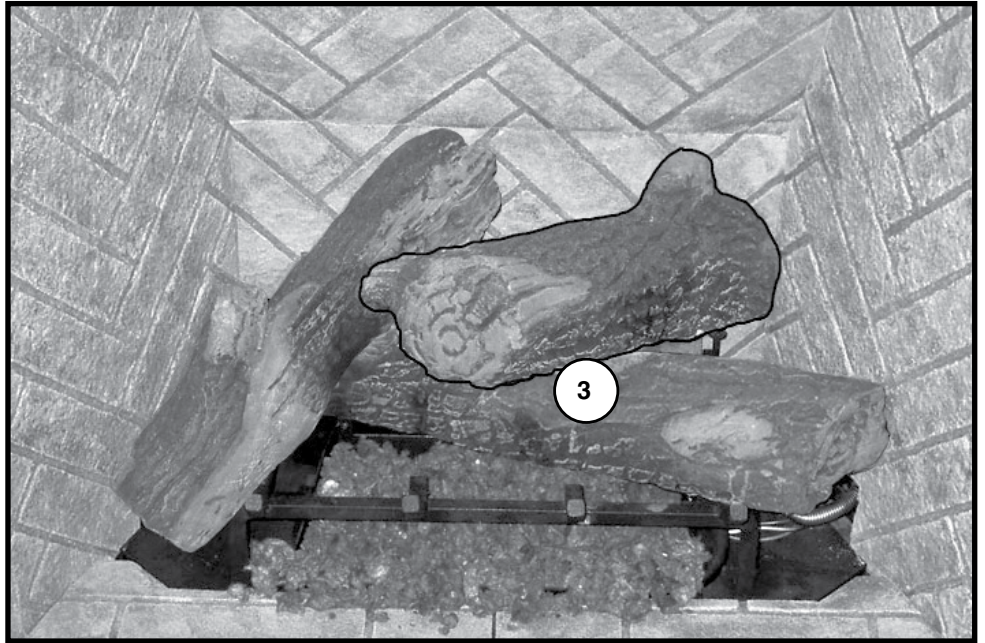


Figure 13: 3rd log placement.

3. Place Log 3 on an angle and engage the holes in the bottom of Log 3 onto the pin in the back corner of the log grate and the pin in the middle of Log 1.
4. Place Log 4 onto log grate resting on the second finger from the left and the narrow part pointing towards the center of the log grate.

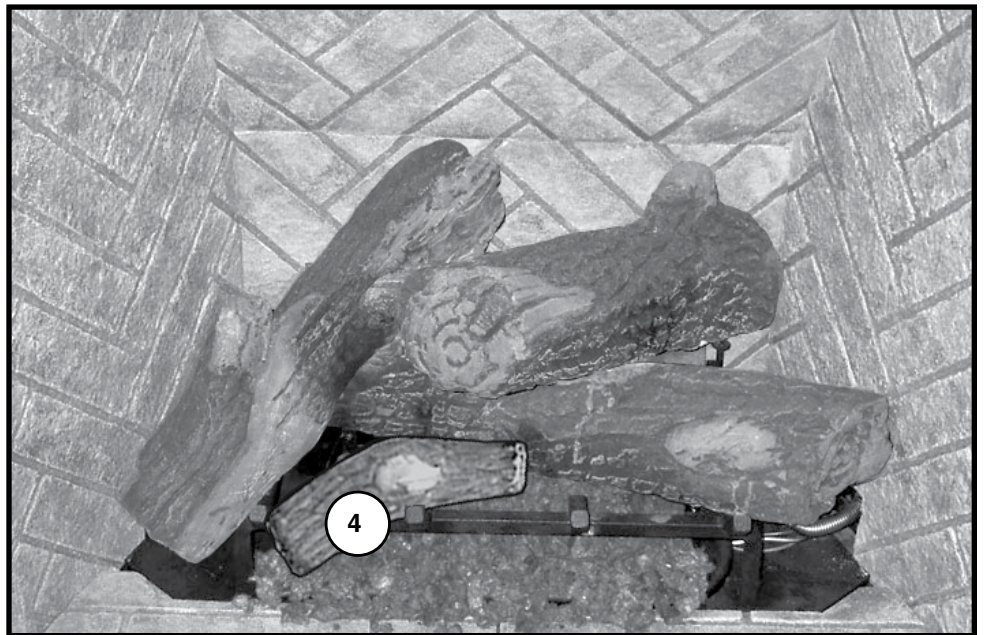


Figure 14: 4th log placement.

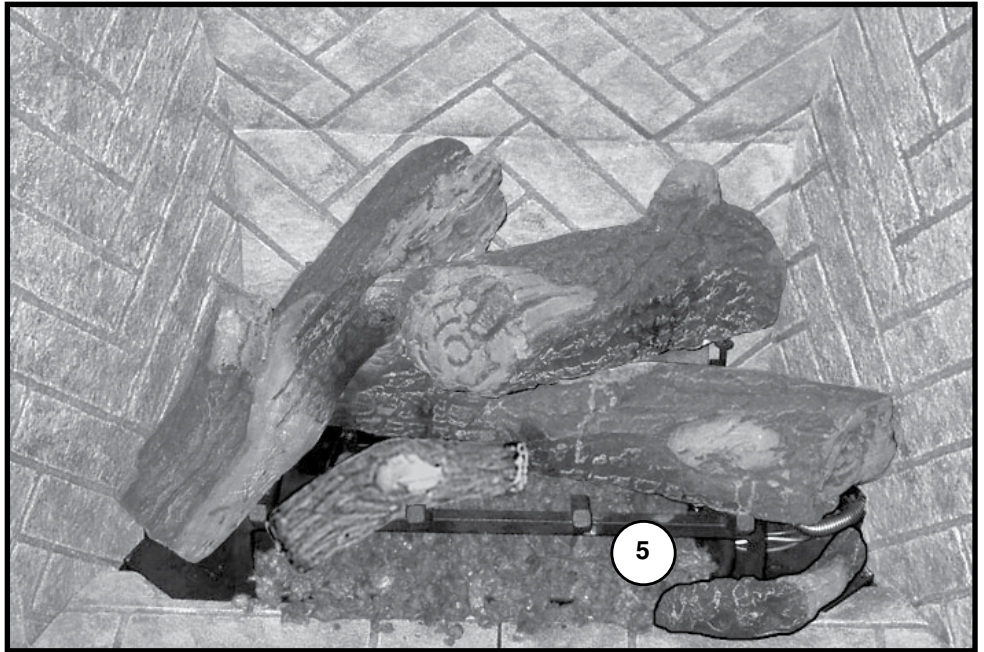


Figure 15: 5th log placement.

5. Place Log 5 on the right front panel, around the right leg of the log grate and with the charred end pointing towards the center of the fireplace.
6. Place Log 6 on the left front panel with the “Y” end pointing to the left side of the fireplace and the other end just in front of the left leg of the log grate.



Figure 16: 6th log placement.



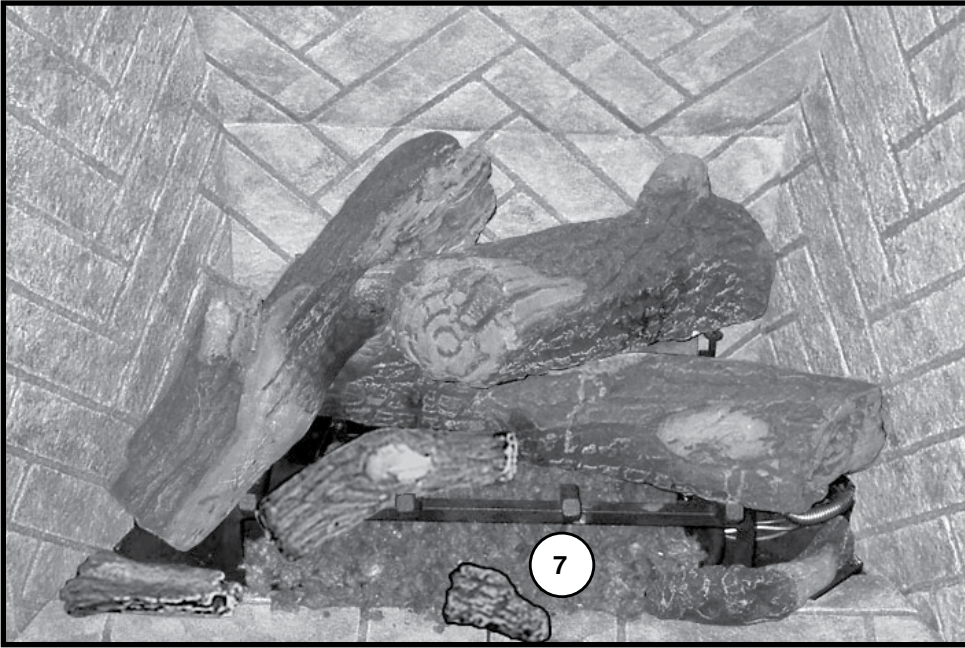


Figure 17: 7th log placement.

7. Place Log 7 in the front center of the fireplace, covering the joint between the two front panels.

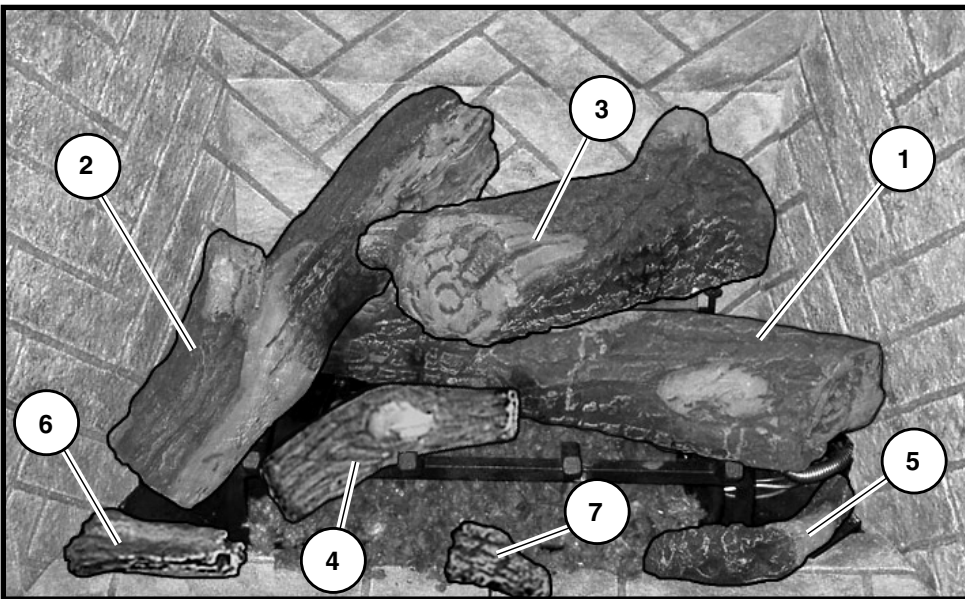


Figure 18: Completed log set placement.

Note:
Improper placement of logs will cause sooting on internal parts and glass. The logs may need to be repositioned slightly to avoid excessive flame impingement.

Burner Flame Adjustment

The air shutter on the burner tube controls the primary combustion air to the gas burner and is pre-set closed at the factory for natural gas fuel. Some adjustment may be necessary to obtain desired flame and to eliminate carbon deposits. Evaluate flame appearance after the fireplace has reached operating temperature. See Figure 19 for proper flame pattern.

Open primary air shutter if the logs, glass, and firebox have carbon accumulation and / or the flames are long, dark and stringy. The shutter may also be opened to enhance the Ember Material glow and lessen the flame height.

Caution: Burner area may be hot! Turn off the fireplace and allow the unit to cool before proceeding.



Figure 19: Example of desirable flame appearance.

Caution: Proper air shutter setting is a must.

The flame should be just orange and "lazy". It should NEVER be set so that it creates sooting on internal parts and glass.

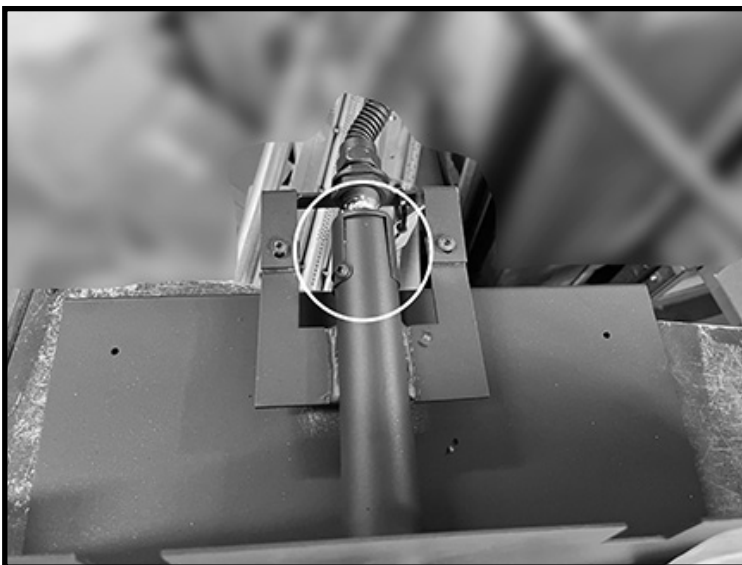


Figure 20: Primary air shutter setting.

To Adjust: See Figure 20

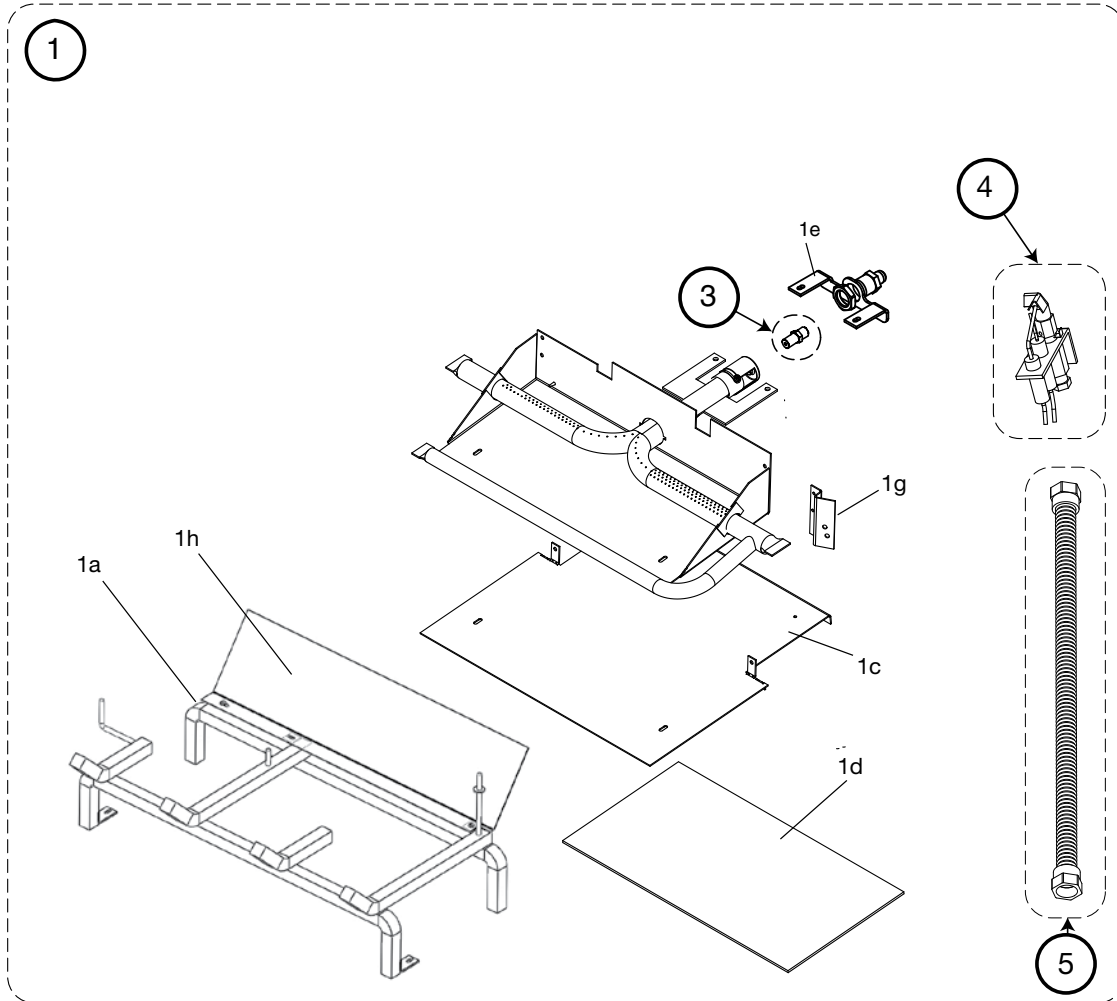
1. Open and remove window frame and set aside. See "Window Frame Removal" section found in the Installation and Operating Instructions manual.
2. Remove the log set and set aside.
3. Remove the air deflector from the log grate.
4. Loosen the screw in the Primary Air Shutter.
5. Rotate the shutter to increase or decrease the amount of primary air.
6. Re assemble in reverse order.



Replacement Parts

(WHEN ORDERING, INCLUDE PART NUMBER WITH DESCRIPTION)

ITEM	DESCRIPTION	PART NO.	ITEM	DESCRIPTION	PART NO.
1	BURNER ASSEMBLY	SKU# 22150037	5	MAIN SUPPLY TUBE.....	80002855
*2	7 PCS LOG SET	80001229	* NOT SHOWN		
3	ORIFICE, NATURAL GAS	NE			
4	PILOT ASSEMBLY(c/w flex tube)	80000522			



Kit Contents

- | | |
|--|--|
| <p>1 BURNER ASSEMBLY</p> <p>1aGRATE</p> <p>1b BURNER TRAY</p> <p>1c BURNER TRAY SUPPORT SHIELD</p> <p>1dBURNER TRAY SHIELD GASKET</p> <p>1e MANIFOLD ASSEMBLY</p>
<p>1g PILOT BRACKET</p> <p>1h AIR DEFLECTOR (Not shown)</p> | <p>2 NOT SHOWN</p> <p>3 ORIFICE, NATURAL GAS (NE)</p> <p>4 PILOT ASSEMBLY, CONVERTIBLE</p> <p>5 MAIN SUPPLY TUBE</p> <p>6 PILOT TUBE</p> |
|--|--|





© 2017 Copyright Pacific Energy Fireplace Products LTD

Reproduction, adaptation, or translation
without prior written permission is prohibited,
except as allowed under the copyright laws.



For technical support, please contact your retailer

**Web site: www.townandcountryfireplaces.net
2975 Allenby Rd., Duncan, BC V9L 6V8**